

Anti-KLF4 antibody (300-400) [S8MR] (STJ11101428)
STJ11101428

GENERAL INFORMATION

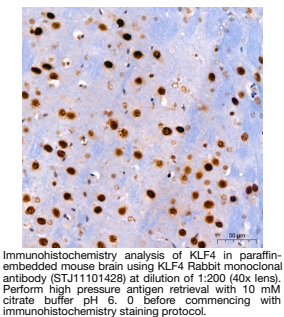
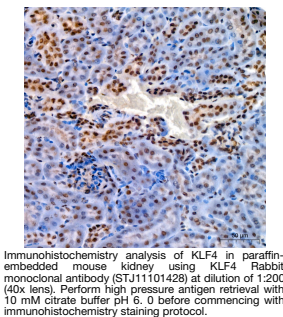
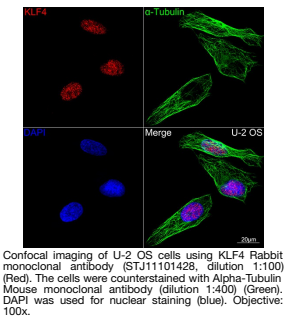
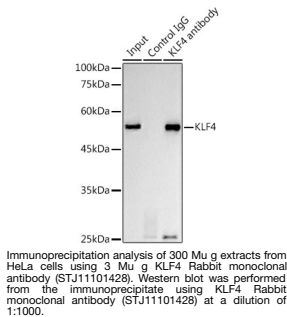
Product Type	Primary antibodies
Short Description	
Applications	WB/IHC-P/I/F/ICC/IP/ELISA
Host/Source	Rabbit
Reactivity	Human/Mouse/Rat

PRODUCT PROPERTIES

Clonality	Monoclonal
Clone ID	S8MR
Concentration	Lot specific
Conjugation	Unconjugated
Purification	Affinity purification
Dilution Range	WB:1:1000-1:2000 IHC-P:1:200-1:2000 IF/ICC:1:100-1:1000 IP:0.5 Mu g-4 Mu g antibody for 200 Mu g-400 Mu g extracts of whole cells ELISA:Recommended starting concentration is 1 Mu g/mL. Please optimize the concentration based on your s
Formulation	PBS with 0.02% Sodium Azide, 0.05% BSA, 50% Glycerol, pH 7.3.
Isotype	IgG
Storage	Store at -20°C for up to 1 year from the date of receipt, and avoid repeat freeze-thaw cycles.
Instruction	

TARGET INFORMATION

Gene ID	9314
Gene Symbol	KLF4
Uniprot ID	KLF4_HUMAN
Immunogen	
Immunogen	300-400
Region	
Specificity	A synthetic peptide corresponding to a sequence within amino acids 300-400 of human KLF4 (O43474).
Immunogen	PAAHDFPLGRQLPSRTTPTL GLEEVLSRDCHPALPLPPG FHPHPGPNYPSFLPDQMMPQ VPPLHYQGQSRGFVARAGEP
Sequence	CVCWPHFGTHGMMLTPPSSP L



This product is suitable for in-vitro studies under the RESEARCH USE ONLY [RUO] licence. This product must not be used as for diagnostic or other medical purposes.
St John's Laboratory Ltd, Knowledge Dock Business Centre, University Way, London, E16 2RD | Tel: 0208 223 3081