

Anti-AGR2 antibody (1-100) [S2MR] (STJ11101412)

STJ11101412

GENERAL INFORMATION

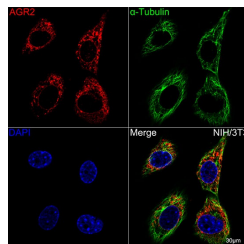
Product Type	Primary antibodies
Short Description	
Applications	WB/IF/ICC/ELISA
Host/Source	Rabbit
Reactivity	Human/Mouse

PRODUCT PROPERTIES

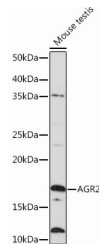
Clonality	Monoclonal
Clone ID	S2MR
Concentration	Lot specific
Conjugation	Unconjugated
Purification	Affinity purification
Dilution Range	WB:1:500-1:2000 IF/ICC:1:50-1:200 ELISA:Recommended starting concentration is 1 Mu g/mL. Please optimize the concentration based on your specific assay requirements.
Formulation	PBS with 0.02% Sodium Azide, 0.05% BSA, 50% Glycerol, pH 7.3.
Isotype	IgG
Storage Instruction	Store at -20°C for up to 1 year from the date of receipt, and avoid repeat freeze-thaw cycles.

TARGET INFORMATION

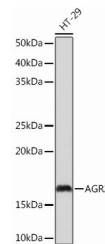
Gene ID	10551
Gene Symbol	AGR2
Uniprot ID	AGR2_HUMAN
Immunogen	
Immunogen Region	1-100
Specificity	A synthetic peptide corresponding to a sequence within amino acids 1-100 of human AGR2 (O95994).
Immunogen Sequence	MEKIPVSAFLLLVALSYTLA RDITVKPGAKKDKDSRPKL PQTLSRGWGDQLIWQTYYEE ALYKSKTSNKPLMIHHLDE CPHSQALKKVFAENKEIQKL



Confocal imaging of NIH/3T3 cells using AGR2A Rabbit monoclonal antibody (STJ11101412, dilution 1:100) (Green). The cells were counterstained with Alpha-tubulin (ubiquitous) chain Rabbit monoclonal antibody (dilution 1:100) (Red). DAPI was used for nuclear staining (blue). Objective: 60x.



Western blot analysis of extracts of Mouse testis, using AGR2 Rabbit monoclonal antibody (STJ11101412) at 1/10000 dilution. Secondary antibody: HRP Goat Anti-Rabbit IgG (H+L) (STJS000856) at 1:10000 dilution. Lysates/proteins: 25 Mu g per lane. Blocking buffer: 3% nonfat dry milk in TBST. Detection: ECL Basic Kit. Exposure time: 3min.



Western blot analysis of extracts of HT-29 cells, using AGR2 Rabbit monoclonal antibody (STJ11101412) at 1/10000 dilution. Secondary antibody: HRP Goat Anti-Rabbit IgG (H+L) (STJS000856) at 1:10000 dilution. Lysates/proteins: 25 Mu g per lane. Blocking buffer: 3% nonfat dry milk in TBST. Detection: ECL Basic Kit. Exposure time: 10s.

This product is suitable for in-vitro studies under the RESEARCH USE ONLY [RUO] licence. This product must not be used as for diagnostic or other medical purposes.
St John's Laboratory Ltd, Knowledge Dock Business Centre, University Way, London, E16 2RD | Tel: 0208 223 3081