

Anti-TOP1 antibody (1-100) [S1MR] (STJ11101411)
STJ11101411

GENERAL INFORMATION

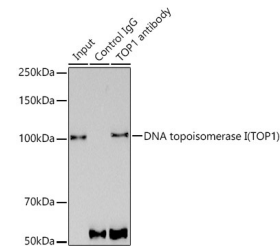
Product Type	Primary antibodies
Short Description	
Applications	WB/IHC-P/IF/ICC/IP/ELISA
Host/Source	Rabbit
Reactivity	Human/Mouse

PRODUCT PROPERTIES

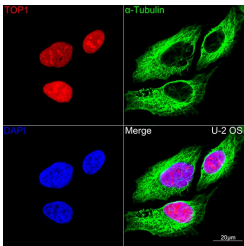
Clonality	Monoclonal
Clone ID	S1MR
Concentration	Lot specific
Conjugation	Unconjugated
Purification	Affinity purification
Dilution Range	WB:1:1000-1:6000 IHC-P:1:200-1:800 IF/ICC:1:100-1:1000 IP:0.5 Mu g-4 Mu g antibody for 200 Mu g-400 Mu g extracts of whole cells ELISA:Recommended starting concentration is 1 Mu g/mL. Please optimize the concentration based on your sp
Formulation	PBS with 0.02% Sodium Azide, 0.05% BSA, 50% Glycerol, pH 7.3.
Isotype	IgG
Storage Instruction	Store at -20°C for up to 1 year from the date of receipt, and avoid repeat freeze-thaw cycles.

TARGET INFORMATION

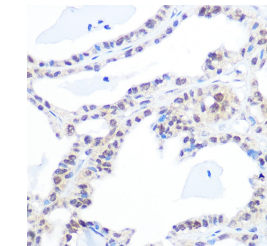
Gene ID	7150
Gene Symbol	TOP1
Uniprot ID	TOP1_HUMAN
Immunogen	
Immunogen Region	1-100
Specificity	A synthetic peptide corresponding to a sequence within amino acids 1-100 of human DNA topoisomerase I (TOP1) (P11387).
Immunogen Sequence	MSGDHLHNDSQIEADFRLLND SHKHKDKHKDREHRHKEHKK EKDRKSKHSNSEHKDSEKK HKEKEKTKHKDGSSEKHKDK HKDRDKEKRKEEKVRASGDA



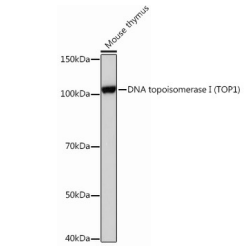
Immunoprecipitation analysis of 300 Mu g extracts of MCF7 cells using 3 Mu g DNA topoisomerase I (TOP1) antibody (STJ11101411). Western blot was performed from the immunoprecipitate using DNA topoisomerase I (TOP1) antibody (STJ11101411) at a dilution of 1:1000.



Confocal imaging of U-2 OS cells using DNA topoisomerase I (TOP1) Rabbit monoclonal antibody (STJ11101411; dilution 1:100) (Red). The cells were counterstained with Alpha-Tubulin Mouse monoclonal antibody (dilution 1:400) (Green). DAPI was used for nuclear staining (blue). Objective: 100x.



Immunohistochemistry analysis of DNA topoisomerase I (TOP1) in paraffin-embedded human thyroid cancer using DNA topoisomerase I (DNA topoisomerase I (TOP1)) Rabbit monoclonal antibody (STJ11101411) at dilution of 1:100 (40x lens). Perform microwave antigen retrieval with 10 mM PBS buffer pH 7, 2 before commencing with immunohistochemistry staining protocol.



Western blot analysis of lysates from Mouse thymus, using DNA topoisomerase I (DNA topoisomerase I (TOP1)) Rabbit monoclonal antibody (STJ11101411) at 1:1000 dilution. Secondary antibody: HRP Goat Anti-Rabbit IgG (H+L) (STJS000856) at 1:10000 dilution. Lysates/proteins: 25 Mu g per lane. Blocking buffer: 3% nonfat dry milk in TBST. Detection: ECL Basic Kit. Exposure time: 5s.

This product is suitable for in-vitro studies under the RESEARCH USE ONLY [RUO] licence. This product must not be used as for diagnostic or other medical purposes.
St John's Laboratory Ltd, Knowledge Dock Business Centre, University Way, London, E16 2RD | Tel: 0208 223 3081