

Anti-DOT1L antibody (1-100) [S7MR] (STJ11101407)

STJ11101407

GENERAL INFORMATION

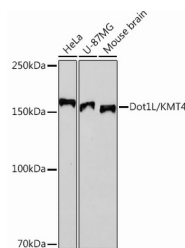
Product Type	Primary antibodies
Short Description	
Applications	WB/IP/ELISA
Host/Source	Rabbit
Reactivity	Human/Mouse

PRODUCT PROPERTIES

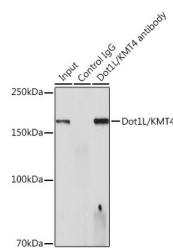
Clonality	Monoclonal
Clone ID	S7MR
Concentration	Lot specific
Conjugation	Unconjugated
Purification	Affinity purification
Dilution Range	WB:1:500-1:1000 IP:0.5 Mu g-4 Mu g antibody for 200 Mu g-400 Mu g extracts of whole cells ELISA:Recommended starting concentration is 1 Mu g/mL. Please optimize the concentration based on your specific assay requirements.
Formulation	PBS with 0.02% Sodium Azide, 0.05% BSA, 50% Glycerol, pH 7.3.
Isotype	IgG
Storage Instruction	Store at -20°C for up to 1 year from the date of receipt, and avoid repeat freeze-thaw cycles.

TARGET INFORMATION

Gene ID	84444
Gene Symbol	DOT1L
Uniprot ID	DOT1L_HUMAN
Immunogen	
Immunogen Region	1-100
Specificity	A synthetic peptide corresponding to a sequence within amino acids 1-100 of human Dot1L/KMT4 (NP_115871.1).
Immunogen Sequence	MGEKLELRKSPVGAEPVY PWPLPVYDKHHDAHEIIET IRWVCEEIPDLKLAMENYVL IDYDTKSFESMQRLCDKYNR AIDSIHQLWKGTTPMKLNT



Western blot analysis of extracts of various cell lines, using Dot1L/KMT4 rabbit monoclonal antibody (STJ11101407) at 1:1000 dilution. Secondary antibody: HRP Goat Anti-rabbit IgG (H+L) at 1:10000 dilution. Lysates/proteins: 25ug per lane. Blocking buffer: 3% nonfat dry milk in TBST. Detection: ECL Basic Kit. Exposure time: 10s.



Immunoprecipitation analysis of 300ug extracts of HeLa cells using 3ug Dot1L/KMT4 antibody (STJ11101407). Western blot was performed from the immunoprecipitate using Dot1L/KMT4 antibody (STJ11101407) at a dilution of 1:1000.

This product is suitable for in-vitro studies under the RESEARCH USE ONLY [RUO] licence. This product must not be used as for diagnostic or other medical purposes.
St John's Laboratory Ltd, Knowledge Dock Business Centre, University Way, London, E16 2RD | Tel: 0208 223 3081