

Anti-LGR5 antibody (800-907) [S6MR] (STJ11101406)

STJ11101406

GENERAL INFORMATION

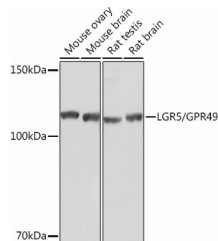
Product Type	Primary antibodies
Short Description	
Applications	WB/ELISA
Host/Source	Rabbit
Reactivity	Mouse/Rat

PRODUCT PROPERTIES

Clonality	Monoclonal
Clone ID	S6MR
Concentration	Lot specific
Conjugation	Unconjugated
Purification	Affinity purification
Dilution Range	WB:1:1000-1:6000 ELISA:Recommended starting concentration is 1 Mu g/mL. Please optimize the concentration based on your specific assay requirements.
Formulation	PBS with 0.02% Sodium Azide, 0.05% BSA, 50% Glycerol, pH 7.3.
Isotype	IgG
Storage	Store at -20°C for up to 1 year from the date of receipt, and avoid repeat freeze-thaw cycles.
Instruction	

TARGET INFORMATION

Gene ID	8549
Gene Symbol	LGR5
Uniprot ID	LGR5_HUMAN
Immunogen	
Immunogen Region	800-907
Specificity	A synthetic peptide corresponding to a sequence within amino acids 800-907 of human LGR5/GPR49 (O75473).
Immunogen Sequence	VIKFIILLVVVPLPACLNPLL YILFNPHFKEDLVSLRKQTY VWTRSKHPSLMSINSDDVEK QSCDSTQALVFTTSSSITYD LPPSSVPSPAYPVTESCHLS SVAFVPCL



Western blot analysis of extracts of various cell lines, using LGR5/GPR49 Rabbit monoclonal antibody (STJ11101406) at 1:1000 dilution. Secondary antibody: HRP Goat Anti-Rabbit IgG (H+L) (STJS00856) at 1:10000 dilution. Lysates/proteins: 25 Mu g per lane. Blocking buffer: 3% nonfat dry milk in TBST. Detection: ECL Basic Kit. Exposure time: 1s.

This product is suitable for in-vitro studies under the RESEARCH USE ONLY [RUO] licence. This product must not be used as for diagnostic or other medical purposes.
St John's Laboratory Ltd, Knowledge Dock Business Centre, University Way, London, E16 2RD | Tel: 0208 223 3081