

Anti-RAB7A antibody (108-207) [S4MR] (STJ11101404)

STJ11101404

GENERAL INFORMATION

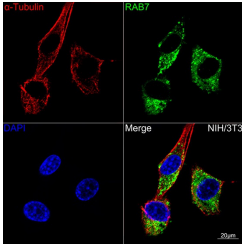
Product Type	Primary antibodies
Short Description	
Applications	WB/IF/CC/ELISA
Host/Source	Rabbit
Reactivity	Human/Mouse/Rat

PRODUCT PROPERTIES

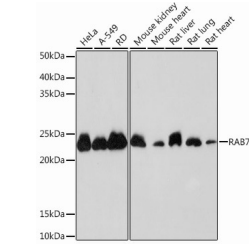
Clonality	Monoclonal
Clone ID	S4MR
Concentration	Lot specific
Conjugation	Unconjugated
Purification	Affinity purification
Dilution Range	WB:1:55000-1:220000 IF/CC:1:100-1:1000 ELISA:Recommended starting concentration is 1 Mu g/mL. Please optimize the concentration based on your specific assay requirements.
Formulation	PBS with 0.05% Proclin300, 0.05% BSA, 50% Glycerol, pH 7.3.
Isotype	IgG
Storage Instruction	Store at-20°C for up to 1 year from the date of receipt, and avoid repeat freeze-thaw cycles.

TARGET INFORMATION

Gene ID	7879
Gene Symbol	RAB7A
Uniprot ID	RAB7A_HUMAN
Immunogen	
Immunogen Region	108-207
Specificity	A synthetic peptide corresponding to a sequence within amino acids 108-207 of human RAB7 (NP_004628.4). IQASPRDPENFPFVVLGNKI DLENRQVATKRAQAWCYSKN NIPYFETSAKEAINVEQAFQ TIARNALKQETEVELYNEFP
Immunogen Sequence	EPKLDKNDRAKASAESCS



Confocal imaging of NIH/3T3 cells using RAB7A Rabbit monoclonal antibody (STJ11101404, dilution 1:100) (Green). The cells were counterstained with Alpha-tubulin (ubiquitous) chain Rabbit monoclonal antibody (dilution 1:100) (Red). DAPI was used for nuclear staining (blue). Objective: 60x.



Western blot analysis of extracts of various cell lines, using RAB7 Rabbit monoclonal antibody (STJ11101404) at 1:1000 dilution. Secondary antibody: HRP Goat Anti-Rabbit IgG (H+L) (STJ5000856) at 1:10000 dilution. Lysates/proteins: 25 Mu g per lane. Blocking buffer: 3% nonfat dry milk in TBST. Detection: ECL Basic Kit. Exposure time: 10s.

This product is suitable for in-vitro studies under the RESEARCH USE ONLY [RUO] licence. This product must not be used as for diagnostic or other medical purposes.
St John's Laboratory Ltd, Knowledge Dock Business Centre, University Way, London, E16 2RD | Tel: 0208 223 3081