

Anti-PIK3C3 antibody (788-887) [S1MR] (STJ11101401)

GENERAL INFORMATION

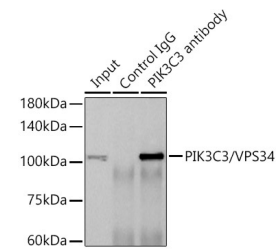
Product Type	Primary antibodies
Short Description	
Applications	WB/IF/ICC/IP/ELISA
Host/Source	Rabbit
Reactivity	Human/Mouse/Rat

PRODUCT PROPERTIES

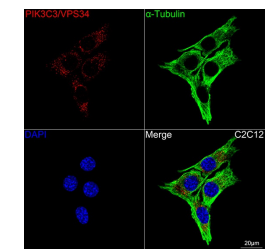
Clonality	Monoclonal
Clone ID	S1MR
Concentration	Lot specific
Conjugation	Unconjugated
Purification	Affinity purification
Dilution Range	WB:1:1000-1:6000 IF/CC:1:200-1:800 IP:0.5 Mu g-4 Mu g antibody for 400 Mu g-600 Mu g extracts of whole cells ELISA:Recommended starting concentration is 1 Mu g/mL. Please optimize the concentration based on your specific assay requiremen
Formulation	PBS with 0.02% Sodium Azide, 0.05% BSA, 50% Glycerol, pH 7.3.
Isotype	IgG
Storage Instruction	Store at-20°C for up to 1 year from the date of receipt, and avoid repeat freeze-thaw cycles.

TARGET INFORMATION

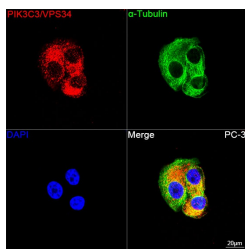
Gene ID	5289
Gene Symbol	PIK3C3
Uniprot ID	PK3C3_HUMAN
Immunogen	
Immunogen Region	788-887
Specificity	A synthetic peptide corresponding to a sequence within amino acids 788-887 of human PIK3C3/VPS34 (Q8NEB9).
Immunogen Sequence	GGTQSEQYQEFRKQCYTAF L HRRYSNLILNLFSLMVDAN IPDIALEPDKTVKKVQDKFR LDLSDEEAVHYMQSLIDESV HALFAAVVEQIHKFAQYWRK



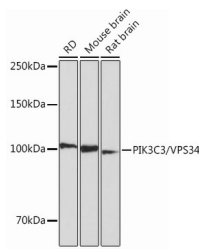
Immunoprecipitation analysis of 600 Mu g extracts of Rat brain cells using 3 Mu g PIK3C3/VPS34 antibody (STJ11101401). Western blot was performed from the immunoprecipitate using PIK3C3/VPS34 antibody (STJ11101401) at a dilution of 1:500.



Confocal imaging of C2C12 cells using PIK3C3/VPS34 Rabbit monoclonal antibody (STJ11101401, dilution 1:200) followed by a further incubation with Cy3 Goat Anti-Rabbit IgG (H+L) (dilution 1:500) (Red). The cells were counterstained with Alpha-Tubulin Mouse monoclonal antibody (dilution 1:400) followed by incubation with ABFluor 488-conjugated Goat Anti-Mouse IgG (H+L) antibody (dilution 1:500) (Green). DAPI was used for nuclear staining (Blue). Objective: 100x.



Confocal imaging of PC-3 cells using PIK3C3/VPS34 Rabbit monoclonal antibody (STJ11101401, dilution 1:200) followed by a further incubation with Cy3 Goat Anti-Rabbit IgG (H+L) (dilution 1:500) (Red). The cells were counterstained with Alpha-Tubulin Mouse monoclonal antibody (dilution 1:400) followed by incubation with ABFluor 488-conjugated Goat Anti-Mouse IgG (H+L) antibody (dilution 1:500) (Green). DAPI was used for nuclear staining (Blue). Objective: 100x.



Western blot analysis of various lysates using PIK3C3/VPS34 Rabbit monoclonal antibody (STJ11101401) at 1/1000 dilution. Secondary antibody: HRP Goat Anti-Rabbit IgG (H+L) (STJUS000856) at 1:10000 dilution. Lysates/proteins: 25 Mu g per lane. Blocking buffer: 3% nonfat dry milk in TBST. Detection: ECL Basic Kit. Exposure time: 10s.

This product is suitable for in-vitro studies under the RESEARCH USE ONLY [RUO] licence. This product must not be used as for diagnostic or other medical purposes.
St John's Laboratory Ltd, Knowledge Dock Business Centre, University Way, London, E16 2RD | Tel: 0208 223 3081