

Anti-TUBB antibody (250-350) [S9MR] (STJ11101399)

STJ11101399

GENERAL INFORMATION

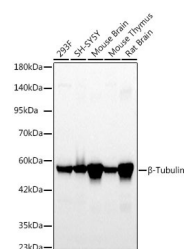
Product Type	Primary antibodies
Short Description	
Applications	WB/IHC-P/IF/ICC/IP/ELISA
Host/Source	Rabbit
Reactivity	Human/Mouse/Rat

PRODUCT PROPERTIES

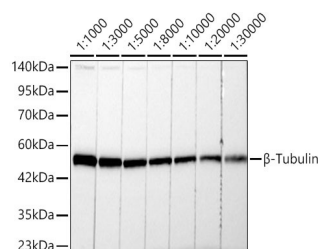
Clonality	Monoclonal
Clone ID	S9MR
Concentration	Lot specific
Conjugation	Unconjugated
Purification	Affinity purification
Dilution Range	WB:1:5000-1:10000 IHC-P:1:50-1:200 IP:0.5 Mu g-4 Mu g antibody for 200 Mu g-400 Mu g extracts of whole cells ELISA:Recommended starting concentration is 1 Mu g/mL. Please optimize the concentration based on your specific assay requirement
Formulation	PBS with 0.02% Sodium Azide, 0.05% BSA, 50% Glycerol, pH 7.3.
Isotype	IgG
Storage	Store at -20°C for up to 1 year from the date of receipt, and avoid repeat freeze-thaw cycles.
Instruction	

TARGET INFORMATION

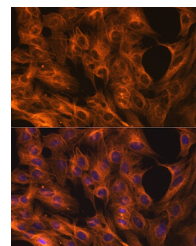
Gene ID	203068
Gene Symbol	TUBB
Uniprot ID	TBB5_HUMAN
Immunogen	
Immunogen Region	250-350
Specificity	A synthetic peptide corresponding to a sequence within amino acids 250-350 of human Beta-Tubulin (P07437).
Immunogen Sequence	LRKLAVNMVFPRLHFFMPG FAPLTSRGSQQYRALVPEL TQQVFDKNNMMAACDPRHGR YLTVAAVFRGRMSMKVEDEQ MLNVQKNSSYFVEWIPNNV K



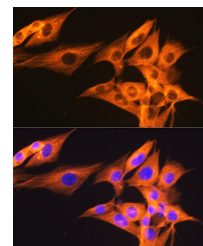
Western blot analysis of extracts of various cell lines, using Beta-Tubulin rabbit monoclonal antibody (STJ11101399) at 1:5000 dilution. Secondary antibody: HRP Goat Anti-rabbit IgG (H+L) (STJ5000856) at 1:10000 dilution. Lysates/proteins: 25 Mu g per lane. Blocking buffer: 3% non-fat dry milk in TBST. Detection: ECL Basic Kit. Exposure time: 20s.



Western blot analysis of 293F cells, using Beta-Tubulin rabbit monoclonal antibody (STJ11101399) at 1:1000-1:30000 dilution. Secondary antibody: HRP Goat Anti-rabbit IgG (H+L) (STJ5000856) at 1:10000 dilution. Lysates/proteins: 25 Mu g per lane. Blocking buffer: 3% non-fat dry milk in TBST. Detection: ECL Basic Kit. Exposure time: 10s.



Immunofluorescence analysis of C6 cells using Beta-Tubulin antibody (STJ11101399) at dilution of 1:100. Blue: DAPI for nuclear staining.



Immunofluorescence analysis of NIH/3T3 cells using Beta-Tubulin antibody (STJ11101399) at dilution of 1:100. Blue: DAPI for nuclear staining.

This product is suitable for in-vitro studies under the RESEARCH USE ONLY [RUO] licence. This product must not be used as for diagnostic or other medical purposes.
St John's Laboratory Ltd, Knowledge Dock Business Centre, University Way, London, E16 2RD | Tel: 0208 223 3081