

Anti-SERPINH1 antibody (319-418) [S3MR] (STJ11101393)
STJ11101393

GENERAL INFORMATION

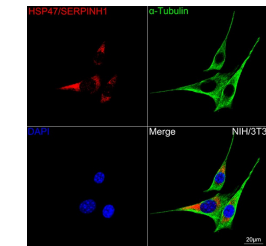
Product Type	Primary antibodies
Short Description	
Applications	WB/IHC-P/IF/ICC/ELISA
Host/Source	Rabbit
Reactivity	Human/Mouse

PRODUCT PROPERTIES

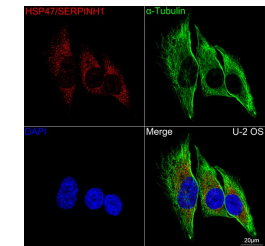
Clonality	Monoclonal
Clone ID	S3MR
Concentration	Lot specific
Conjugation	Unconjugated
Purification	Affinity purification
Dilution Range	WB:1:1000-1:2000 IHC-P:1:100-1:800 IF/ICC:1:100-1:400 ELISA:Recommended starting concentration is 1 Mu g/mL. Please optimize the concentration based on your specific assay requirements.
Formulation	PBS with 0.02% Sodium Azide, 0.05% BSA, 50% Glycerol, pH 7.3.
Isotype	IgG
Storage Instruction	Store at -20°C for up to 1 year from the date of receipt, and avoid repeat freeze-thaw cycles.

TARGET INFORMATION

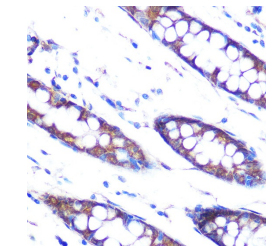
Gene ID	871
Gene Symbol	SERPINH1
Uniprot ID	SERPH_HUMAN
Immunogen	
Immunogen Region	319-418
Specificity	A synthetic peptide corresponding to a sequence within amino acids 319-418 of human HSP47/SERPINH1 (P50454).
Immunogen Sequence	KHLAAGLGLTEAIDKNKADLS RMSGKKDLYLASVFHATAFE LDTDGNPFDQDIYGREELRS PKLFYADHPFIFLVRDTQSG SLLFIGRLVRPKGDKMRDEL



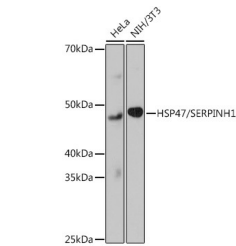
Confocal imaging of NIH/3T3 cells using HSP47/SERPINH1 Rabbit monoclonal antibody (STJ11101393, dilution 1:100) followed by a further incubation with Cy3 Goat Anti-Rabbit IgG (H+L) (dilution 1:500) (Red). The cells were counterstained with Alpha-Tubulin Mouse monoclonal antibody (dilution 1:400) followed by incubation with ABFluor 488-conjugated Goat Anti-Mouse IgG (H+L) antibody (dilution 1:500) (Green). DAPI was used for nuclear staining (Blue). Objective: 100x.



Confocal imaging of U-2 OS cells using HSP47/SERPINH1 Rabbit monoclonal antibody (STJ11101393, dilution 1:100) followed by a further incubation with Cy3 Goat Anti-Rabbit IgG (H+L) (dilution 1:500) (Red). The cells were counterstained with Alpha-Tubulin Mouse monoclonal antibody (dilution 1:400) followed by incubation with ABFluor 488-conjugated Goat Anti-Mouse IgG (H+L) antibody (dilution 1:500) (Green). DAPI was used for nuclear staining (Blue). Objective: 100x.



Immunohistochemistry analysis of HSP47/SERPINH1 in paraffin-embedded human colon using HSP47/SERPINH1 Rabbit monoclonal antibody (STJ11101393) at dilution of 1:100 (40x lens). Perform microwave antigen retrieval with 10 mM PBS buffer pH 7.2 before commencing with immunohistochemistry staining protocol.



Western blot analysis of various lysates using HSP47/SERPINH1 Rabbit monoclonal antibody (STJ11101393) at 1:1000 dilution. Secondary antibody: HRP Goat Anti-Rabbit IgG (H+L) (STJS000856) at 1:10000 dilution. Lysates/proteins: 25 Mu g per lane. Blocking buffer: 3% nonfat dry milk in TBST. Detection: ECL Basic Kit. Exposure time: 3min.

This product is suitable for in-vitro studies under the RESEARCH USE ONLY [RUO] licence. This product must not be used as for diagnostic or other medical purposes.
St John's Laboratory Ltd, Knowledge Dock Business Centre, University Way, London, E16 2RD | Tel: 0208 223 3081