

Anti-ATP2A2 antibody (943-1042) [S2MR] (STJ11101392)

STJ11101392

GENERAL INFORMATION

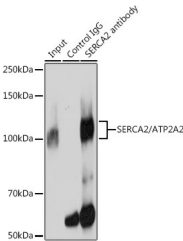
Product Type	Primary antibodies
Short Description	
Applications	WB/IF/ICC/IP/ELISA
Host/Source	Rabbit
Reactivity	Human/Mouse/Rat

PRODUCT PROPERTIES

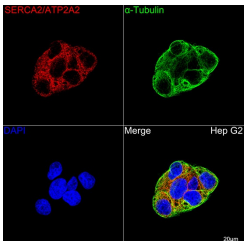
Clonality	Monoclonal
Clone ID	S2MR
Concentration	Lot specific
Conjugation	Unconjugated
Purification	Affinity purification
Dilution Range	WB:1:1000-1:6000 IF/ICC:1:100-1:1000 IP:0.5 Mu g-4 Mu g antibody for 200 Mu g-400 Mu g extracts of whole cells ELISA:Recommended starting concentration is 1 Mu g/mL. Please optimize the concentration based on your specific assay requireme
Formulation	PBS with 0.02% Sodium Azide, 0.05% BSA, 50% Glycerol, pH 7.3.
Isotype	IgG
Storage Instruction	Store at-20°C for up to 1 year from the date of receipt, and avoid repeat freeze-thaw cycles.

TARGET INFORMATION

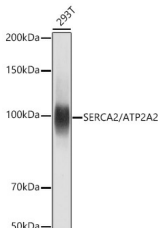
Gene ID	488
Gene Symbol	ATP2A2
Uniprot ID	AT2A2_HUMAN
Immunogen	
Immunogen Region	943-1042
Specificity	A synthetic peptide corresponding to a sequence within amino acids 943-1042 of human SERCA2/ATP2A2 (P16615).
Immunogen Sequence	HFLILYVEPLPLIFQITPLN VTQWLMLVKISLPVILMDET LKFVARNYLEPGKECVQPAT KSCSFSACTDGISWPFVLLI MPLVWVYSTDTNFSDMFWS



Immunoprecipitation analysis of 300 Mu g extracts of 293T cells using 3 Mu g SERCA2/ATP2A2 antibody (STJ11101392). Western blot was performed from the immunoprecipitate using SERCA2/ATP2A2 antibody (STJ11101392) at a dilution of 1:3000.



Confocal imaging of Hep G2 cells using A SERCA2/ATP2A2 Rabbit monoclonal antibody (STJ11101392, dilution 1:100) followed by a further incubation with Cy3 Goat Anti-Rabbit IgG (H+L) (dilution 1:500) (Red). The cells were counterstained with Alpha-Tubulin Mouse monoclonal antibody (dilution 1:400) followed by incubation with ABFluor 488-conjugated Goat Anti-Mouse IgG (H+L) antibody (dilution 1:500) (Green). DAPI was used for nuclear staining (Blue). Objective: 100x.



Western blot analysis of various lysates using SERCA2/ATP2A2 Rabbit monoclonal antibody (STJ11101392) at 1:1000 dilution. Secondary antibody: HRP Goat Anti-Rabbit IgG (H+L) (STJS000856) at 1:10000 dilution. Lysates/proteins: 25 Mu g per lane. Blocking buffer: 3% nonfat dry milk in TBST. Detection: ECL Basic Kit. Exposure time: 1s.

This product is suitable for in-vitro studies under the RESEARCH USE ONLY [RUO] licence. This product must not be used as for diagnostic or other medical purposes.
St John's Laboratory Ltd, Knowledge Dock Business Centre, University Way, London, E16 2RD | Tel: 0208 223 3081