

Anti-MITF antibody (387-509) [S9MR] (STJ11101379)

STJ11101379

GENERAL INFORMATION

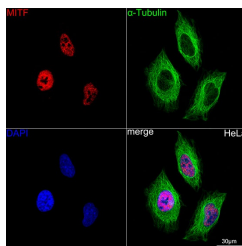
Product Type	Primary antibodies
Short Description	
Applications	IF/ICC/ELISA
Host/Source	Rabbit
Reactivity	Human/Mouse/Rat

PRODUCT PROPERTIES

Clonality	Monoclonal
Clone ID	S9MR
Concentration	Lot specific
Conjugation	Unconjugated
Purification	Affinity purification
Dilution Range	IF/ICC:1:50-1:200 ELISA:Recommended starting concentration is 1 Mu g/mL. Please optimize the concentration based on your specific assay requirements.
Formulation	PBS with 0.02% Sodium Azide, 0.05% BSA, 50% Glycerol, pH 7.3.
Isotype	IgG
Storage Instruction	Store at -20°C for up to 1 year from the date of receipt, and avoid repeat freeze-thaw cycles.

TARGET INFORMATION

Gene ID	4286
Gene Symbol	MITF
Uniprot ID	MITF_HUMAN
Immunogen	
Immunogen Region	387-509
Specificity	Recombinant fusion protein containing a sequence corresponding to amino acids 387-509 of human MITF (O75030). HLLLRIQELEMQARAHGLSL IPSTGLCSPDLVNRIIKQEP VLENCSDLLQHHADLTCTT TLDLTDGTITFNNNLGTGTE
Immunogen Sequence	ANQAYSVP TKMGSKLEDILM DDTLSPVGVTDP LLSSVSPG ASK



Confocal imaging of HeLa cells using MITF Rabbit monoclonal antibody (STJ11101379, dilution 1:100) (Red). The cells were counterstained with Alpha-Tubulin Mouse monoclonal antibody (dilution 1:400) (Green). DAPI was used for nuclear staining (blue). Objective: 60x.

This product is suitable for in-vitro studies under the RESEARCH USE ONLY [RUO] licence. This product must not be used as for diagnostic or other medical purposes.
St John's Laboratory Ltd, Knowledge Dock Business Centre, University Way, London, E16 2RD | Tel: 0208 223 3081