

Anti-KNG1 antibody (545-644) [S4MR] (STJ11101374)
STJ11101374

GENERAL INFORMATION

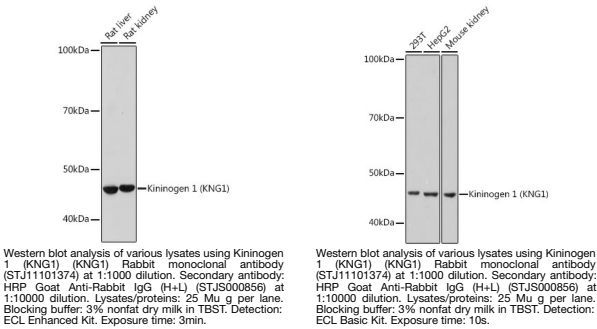
Product Type	Primary antibodies
Short Description	
Applications	WB/ELISA
Host/Source	Rabbit
Reactivity	Human/Mouse/Rat

PRODUCT PROPERTIES

Clonality	Monoclonal
Clone ID	S4MR
Concentration	Lot specific
Conjugation	Unconjugated
Purification	Affinity purification
Dilution Range	WB:1:500-1:1000 ELISA:Recommended starting concentration is 1 Mu g/mL. Please optimize the concentration based on your specific assay requirements.
Formulation	PBS with 0.02% Sodium Azide, 0.05% BSA, 50% Glycerol, pH 7.3.
Isotype	IgG
Storage Instruction	Store at -20°C for up to 1 year from the date of receipt, and avoid repeat freeze-thaw cycles.

TARGET INFORMATION

Gene ID	3827
Gene Symbol	KNG1
Uniprot ID	KNG1_HUMAN
Immunogen	
Immunogen Region	545-644
Specificity	A synthetic peptide corresponding to a sequence within amino acids 545-644 of human Kininogen 1 (KNG1) (NP_001095886.1).
Immunogen Sequence	PTPIPLAKPGVTVTFSDFQ DSDLIATMMPPISPAPIQSD DDWIPDIQIDPNGLSFNPIS DFPDTTSPKCPGRPWKSVSE INPTTQMKEYSYFDLTDGLS



This product is suitable for in-vitro studies under the RESEARCH USE ONLY [RUO] licence. This product must not be used as for diagnostic or other medical purposes.
St John's Laboratory Ltd, Knowledge Dock Business Centre, University Way, London, E16 2RD | Tel: 0208 223 3081