

Anti-DDB2 antibody (220-427) [S0MR] (STJ11101370)

STJ11101370

GENERAL INFORMATION

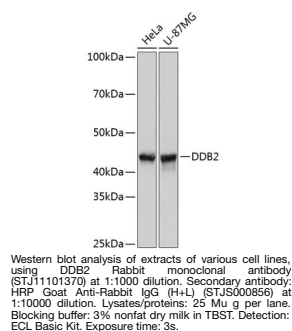
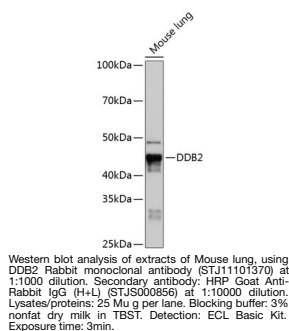
Product Type	Primary antibodies
Short Description	
Applications	WB/ELISA
Host/Source	Rabbit
Reactivity	Human/Mouse

PRODUCT PROPERTIES

Clonality	Monoclonal
Clone ID	S0MR
Concentration	Lot specific
Conjugation	Unconjugated
Purification	Affinity purification
Dilution	WB:1:1000-1:2000
Range	ELISA:Recommended starting concentration is 1 Mu g/mL. Please optimize the concentration based on your specific assay requirements.
Formulation	PBS with 0.02% Sodium Azide, 0.05% BSA, 50% Glycerol, pH 7.3.
Isotype	IgG
Storage	Store at -20°C for up to 1 year from the date of receipt, and avoid repeat freeze-thaw cycles.
Instruction	

TARGET INFORMATION

Gene ID	1643
Gene Symbol	DDB2
Uniprot ID	DDB2_HUMAN
Immunogen	
Immunogen Region	220-427
Specificity	Recombinant fusion protein containing a sequence corresponding to amino acids 220-427 of human DDB2 (Q92466). DNVGNVILLNMDGKELWNLR MHKKKVTHVALNPCCDWFLA TASVDQTVKIWDLRQVRGKA SFLYSLPHRHPVNAACFSPD GARLLTTDQKSEIRVYSASQ WDCPLGLIPHRHFQHLTP IKAAWHPRYNLIVVGYPDP NFKSCTPYELRTIDVFDGNS GKMMCQLYDESSGSSLINE FNPMGDTLASAMGYHILIWS QEEARTRK
Immunogen Sequence	



This product is suitable for in-vitro studies under the RESEARCH USE ONLY [RUO] licence. This product must not be used as for diagnostic or other medical purposes.
St John's Laboratory Ltd, Knowledge Dock Business Centre, University Way, London, E16 2RD | Tel: 0208 223 3081