

Anti-GSS antibody (350-450) [S8MR] (STJ11101358)

STJ11101358

GENERAL INFORMATION

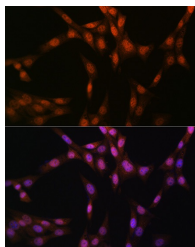
Product Type	Primary antibodies
Short Description	
Applications	WB/IF/ICC/ELISA
Host/Source	Rabbit
Reactivity	Human/Mouse/Rat

PRODUCT PROPERTIES

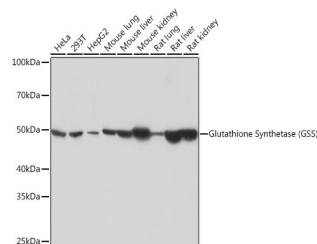
Clonality	Monoclonal
Clone ID	S8MR
Concentration	Lot specific
Conjugation	Unconjugated
Purification	Affinity purification
Dilution Range	WB:1:500-1:1000 IF/ICC:1:50-1:200 ELISA:Recommended starting concentration is 1 Mu g/mL. Please optimize the concentration based on your specific assay requirements.
Formulation	PBS with 0.02% Sodium Azide, 0.05% BSA, 50% Glycerol, pH 7.3.
Isotype	IgG
Storage Instruction	Store at -20°C for up to 1 year from the date of receipt, and avoid repeat freeze-thaw cycles.

TARGET INFORMATION

Gene ID	2937
Gene Symbol	GSS
Uniprot ID	GSHB_HUMAN
Immunogen	
Immunogen Region	350-450
Specificity	A synthetic peptide corresponding to a sequence within amino acids 350-450 of human Glutathione Synthetase (GSS) (P48637).
Immunogen Sequence	AIAEALAAPSRFLKPKQREG GGNLYGEEMVQALKQLKDS EERASYILMEKIEPEPFENC LLRPGSPARVVQCISELGIF GVVYVRQEKTLVMNKHVGHLL R



Immunofluorescence analysis of NIH-3T3 cells using Glutathione Synthetase (GSS) (GSS) Rabbit monoclonal antibody (STJ11101358) at dilution of 1:100 (40x lens). Blue: DAPI for nuclear staining.



Western blot analysis of extracts of various cell lines, using Glutathione Synthetase (GSS) (GSS) Rabbit monoclonal antibody (STJ11101358) at 1/10000 dilution. Secondary antibody: HRP Goat Anti-Rabbit IgG (H+L) (STJS000856) at 1:10000 dilution. Lysates/proteins: 25 Mu g per lane. Blocking buffer: 3% nonfat dry milk in TBST. Detection: ECL Basic Kit. Exposure time: 3min.

This product is suitable for in-vitro studies under the RESEARCH USE ONLY [RUO] licence. This product must not be used as for diagnostic or other medical purposes.
St John's Laboratory Ltd, Knowledge Dock Business Centre, University Way, London, E16 2RD | Tel: 0208 223 3081