

Anti-ARHGDI2 antibody (70-150) [S7MR] (STJ11101357)
STJ11101357

GENERAL INFORMATION

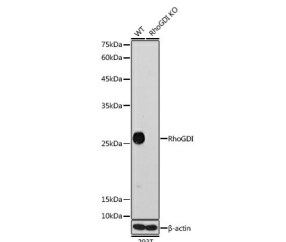
Product Type	Primary antibodies
Short Description	
Applications	WB/ELISA
Host/Source	Rabbit
Reactivity	Human/Mouse/Rat

PRODUCT PROPERTIES

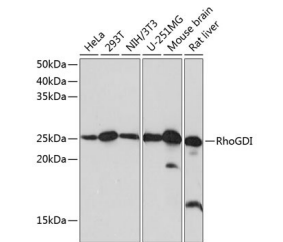
Clonality	Monoclonal
Clone ID	S7MR
Concentration	Lot specific
Conjugation	Unconjugated
Purification	Affinity purification
Dilution Range	WB:1:500-1:1000 ELISA:Recommended starting concentration is 1 μ g/mL. Please optimize the concentration based on your specific assay requirements.
Formulation	PBS with 0.02% Sodium Azide, 0.05% BSA, 50% Glycerol, pH 7.3.
Isotype	IgG
Storage Instruction	Store at -20°C for up to 1 year from the date of receipt, and avoid repeat freeze-thaw cycles.

TARGET INFORMATION

Gene ID	396
Gene Symbol	ARHGDI2
Uniprot ID	GDIR1_HUMAN
Immunogen	
Immunogen Region	70-150
Specificity	A synthetic peptide corresponding to a sequence within amino acids 70-150 of human RhoGDI (P52565).
Immunogen Sequence	VVVTGLTLVCSSAPGPLELD LTGDLESFKKQSFVLKEGVE YRIKISFRVNVREIVSGMKYI QHTYRKGVKIDKTDYVMVGSY G



Western blot analysis of extracts from wild type (WT) and RhoGDI2 knockout (KO) 293T cells, using RhoGDI2 antibody (STJ11101357) at 1:1000 dilution. Secondary antibody: HRP Goat Anti-Rabbit IgG (H+L) (STJ5000856) at 1:10000 dilution. Lysates/proteins: 25 μ g per lane. Blocking buffer: 3% nonfat dry milk in TBST. Detection: ECL Basic Kit. Exposure time: 30s.



Western blot analysis of extracts of various cell lines, using RhoGDI2 Rabbit monoclonal antibody (STJ11101357) at 1 μ g/1000 dilution. Secondary antibody: HRP Goat Anti-Rabbit IgG (H+L) (STJ5000856) at 1:10000 dilution. Lysates/proteins: 25 μ g per lane. Blocking buffer: 3% nonfat dry milk in TBST. Detection: ECL Basic Kit. Exposure time: 10s.

This product is suitable for in-vitro studies under the RESEARCH USE ONLY [RUO] licence. This product must not be used as for diagnostic or other medical purposes.
St John's Laboratory Ltd, Knowledge Dock Business Centre, University Way, London, E16 2RD | Tel: 0208 223 3081