

Anti-E2F6 antibody (110-281) [S6MR] (STJ11101356)
STJ11101356

GENERAL INFORMATION

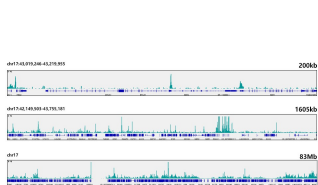
Product Type	Primary antibodies
Short Description	
Applications	WB/IP/ELISA/ChIP/CUT&Tag
Host/Source	Rabbit
Reactivity	Human

PRODUCT PROPERTIES

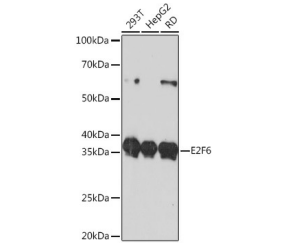
Clonality	Monoclonal
Clone ID	S6MR
Concentration	Lot specific
Conjugation	Unconjugated
Purification	Affinity purification
Dilution	WB: 1:500-1:2000
Range	IP: 0.5 Mu g-4 Mu g antibody for 200 Mu g-400 Mu g extracts of whole cells ELISA: Recommended starting concentration is 1 Mu g/mL. Please optimize the concentration based on your specific assay requirements. ChIP: 5 Mu g anti
Formulation	PBS with 0.02% Sodium Azide, 0.05% BSA, 50% Glycerol, pH 7.3.
Isotype	IgG
Storage	Store at -20°C for up to 1 year from the date of receipt, and avoid repeat freeze-thaw cycles.
Instruction	

TARGET INFORMATION

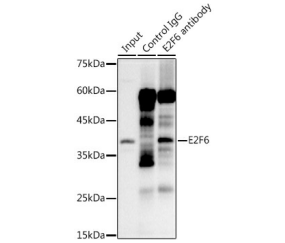
Gene ID	1876
Gene Symbol	E2F6
Uniprot ID	E2F6_HUMAN
Immunogen	
Immunogen Region	110-281
Specificity	Recombinant fusion protein containing a sequence corresponding to amino acids 110-281 of human E2F6 (NP_937987.2)
Immunogen Sequence	LDGIDLVEKSKNHIRWIGS DLSNFGAVPQQKKLQEELSD LSAMEDALDELKDCAQQLF ELTDDKENERLAYVITYQDIH SIQAFHEQIVAVKAPAEATR LDVPAPREDSITVHIRSTNG PIDVYLCEVEQGGTQSNKRSE GVGTSSESTHPEGPEEEEN PQQSEELLEVS



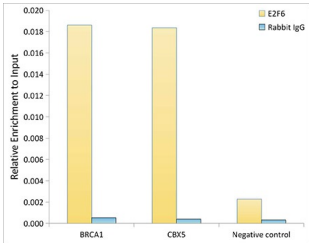
CUT&Tag was performed using the CUT&Tag Assay Kit (pAG-Tn5) for Illumina (RK20285) from 10x K562 cells with 1 Mu g E2F6 rabbit monoclonal antibody (STJ11101356), along with a Goat Anti-rabbit IgG (H+L). The CUT&Tag results indicate the enrichment pattern of E2F6 in representative gene loci (BRCA1), as shown in figure.



Western blot analysis of extracts of various cell lines, using E2F6 rabbit monoclonal antibody (STJ11101356) at 1:1000 dilution. Secondary antibody: HRP Goat Anti-rabbit IgG (H+L) (STJS000856) at 1:10000 dilution. Lysates/proteins: 25 Mu g per lane. Blocking buffer: 3% non-fat dry milk in TBST. Detection: ECL Basic Kit. Exposure time: 90s.



Immunoprecipitation analysis of 300 Mu g extracts of 293T cells using 3 Mu g E2F6 antibody (STJ11101356). Western blot was performed from the immunoprecipitate using E2F6 antibody (STJ11101356) at a dilution of 1:1000.



Chromatin immunoprecipitation analysis of extracts of 293T cells, using E2F6 antibody (STJ11101356) and rabbit IgG. The amount of immunoprecipitated DNA was checked by quantitative PCR. Histogram was constructed by the ratios of the immunoprecipitated DNA to the input.

This product is suitable for in-vitro studies under the RESEARCH USE ONLY [RUO] licence. This product must not be used as for diagnostic or other medical purposes.
St John's Laboratory Ltd, Knowledge Dock Business Centre, University Way, London, E16 2RD | Tel: 0208 223 3081