

Anti-GOLGA2 antibody (1-100) [S5MR] (STJ11101325)

STJ11101325

GENERAL INFORMATION

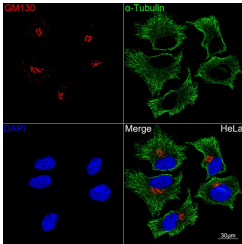
Product Type	Primary antibodies
Short Description	
Applications	WB/IHC-P/IF/ICC/ELISA
Host/Source	Rabbit
Reactivity	Human/Mouse/Rat

PRODUCT PROPERTIES

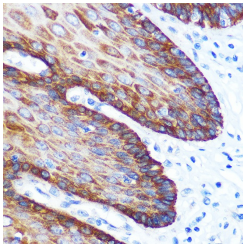
Clonality	Monoclonal
Clone ID	S5MR
Concentration	Lot specific
Conjugation	Unconjugated
Purification	Affinity purification
Dilution Range	WB:1:1000-1:6000 IHC-P:1:200-1:2000 IF/ICC:1:100-1:2000 ELISA:Recommended starting concentration is 1 Mu g/mL. Please optimize the concentration based on your specific assay requirements.
Formulation	PBS with 0.02% Sodium Azide, 0.05% BSA, 50% Glycerol, pH 7.3.
Isotype	IgG
Storage Instruction	Store at -20°C for up to 1 year from the date of receipt, and avoid repeat freeze-thaw cycles.

TARGET INFORMATION

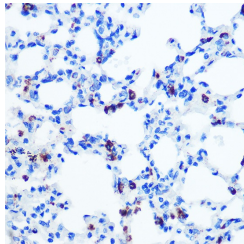
Gene ID	2801
Gene Symbol	GOLGA2
Uniprot ID	GOGA2_HUMAN
Immunogen	
Immunogen Region	1-100
Specificity	A synthetic peptide corresponding to a sequence within amino acids 1-100 of human GM130 (Q08379).
Immunogen Sequence	MWPQPRLPPRPAMSEETRQS KLAAAKKKLREYQQRNSPGV PTGAKKKKKIKNGSNPETTT SGGCHSPEDTPKDNAATLQP
Sequence	SDDTVLPGGVPSGASLTSM



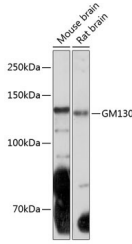
Confocal imaging of HeLa cells using GM130A Rabbit monoclonal antibody (STJ11101325, dilution 1:100) (Red). The cells were counterstained with Alpha-Tubulin Mouse monoclonal antibody (dilution 1:200) (Green). DAPI was used for nuclear staining (blue). Objective: 60x.



Immunohistochemistry analysis of GM130 in paraffin-embedded human esophageal using GM130 Rabbit monoclonal antibody (STJ11101325) at dilution of 1:100 (40x lens). Perform microwave antigen retrieval with 10 mM PBS buffer pH 7.2 before commencing with immunohistochemistry staining protocol.



Immunohistochemistry analysis of GM130 in paraffin-embedded rat lung using GM130 Rabbit monoclonal antibody (STJ11101325) at dilution of 1:100 (40x lens). Perform microwave antigen retrieval with 10 mM PBS buffer pH 7.2 before commencing with immunohistochemistry staining protocol.



Western blot analysis of various lysates using GM130 Rabbit monoclonal antibody (STJ11101325) at 1/41000 dilution. Secondary antibody: HRP Goat Anti-Rabbit IgG (H+L) (STJSD00856) at 1:10000 dilution. Lysates/proteins: 25 Mu g per lane. Blocking buffer: 3% nonfat dry milk in TBST. Detection: ECL Basic Kit. Exposure time: 3min.

This product is suitable for in-vitro studies under the RESEARCH USE ONLY [RUO] licence. This product must not be used as for diagnostic or other medical purposes.
St John's Laboratory Ltd, Knowledge Dock Business Centre, University Way, London, E16 2RD | Tel: 0208 223 3081