

Anti-HLA-A antibody (1-100) [S4MR] (STJ11101324)
STJ11101324

GENERAL INFORMATION

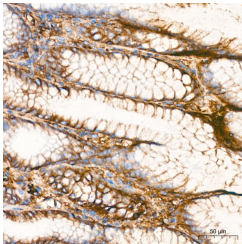
| | |
|--------------------------|--------------------|
| Product Type | Primary antibodies |
| Short Description | |
| Applications | WB/IHC-P/ELISA |
| Host/Source | Rabbit |
| Reactivity | Human |

PRODUCT PROPERTIES

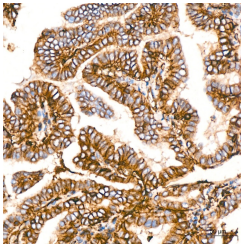
| | |
|----------------------------|---|
| Clonality | Monoclonal |
| Clone ID | S4MR |
| Concentration | Lot specific |
| Conjugation | Unconjugated |
| Purification | Affinity purification |
| Dilution Range | WB:1:1000-1:6000 IHC-P:1:200-1:2000 ELISA:Recommended starting concentration is 1 µg/mL. Please optimize the concentration based on your specific assay requirements. |
| Formulation | PBS with 0.02% Sodium Azide, 0.05% BSA, 50% Glycerol, pH 7.3. |
| Isotype | IgG |
| Storage Instruction | Store at -20°C for up to 1 year from the date of receipt, and avoid repeat freeze-thaw cycles. |

TARGET INFORMATION

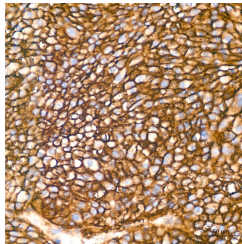
| | |
|---------------------------|--|
| Gene ID | 3105 |
| Gene Symbol | HLA-A |
| Uniprot ID | HLAA_HUMAN |
| Immunogen | |
| Immunogen Region | 1-100 |
| Specificity | A synthetic peptide corresponding to a sequence within amino acids 1-100 of human HLA-A (P04439). |
| Immunogen Sequence | MAVMAPRTLTLSSGALALT QTWAGSHSMRYFFTSVSRPG RGEPRFIAVGYYDDTQFVRF DSDAASQRMEPRAPWIEQEG PEYWDQETRNKVAQSQTDTRV |



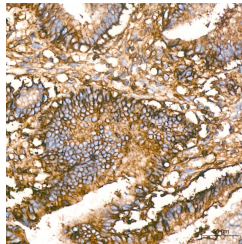
Immunohistochemistry analysis of HLA-A in paraffin-embedded human stomach tissue using HLA-A Rabbit monoclonal antibody (STJ11101324) at a dilution of 1:200 (40x lens). High pressure antigen retrieval was performed with 0.01 M citrate buffer (pH 6.0) prior to immunohistochemistry staining.



Immunohistochemistry analysis of HLA-A in paraffin-embedded human thyroid cancer tissue using HLA-A Rabbit monoclonal antibody (STJ11101324) at a dilution of 1:200 (40x lens). High pressure antigen retrieval was performed with 0.01 M citrate buffer (pH 6.0) prior to immunohistochemistry staining.



Immunohistochemistry analysis of HLA-A in paraffin-embedded human liver cancer tissue using HLA-A Rabbit monoclonal antibody (STJ11101324) at a dilution of 1:200 (40x lens). High pressure antigen retrieval was performed with 0.01 M citrate buffer (pH 6.0) prior to immunohistochemistry staining.



Immunohistochemistry analysis of HLA-A in paraffin-embedded human colon carcinoma tissue using HLA-A Rabbit monoclonal antibody (STJ11101324) at a dilution of 1:200 (40x lens). High pressure antigen retrieval was performed with 0.01 M citrate buffer (pH 6.0) prior to immunohistochemistry staining.

This product is suitable for in-vitro studies under the RESEARCH USE ONLY [RUO] licence. This product must not be used as for diagnostic or other medical purposes.
St John's Laboratory Ltd, Knowledge Dock Business Centre, University Way, London, E16 2RD | Tel: 0208 223 3081