

Anti-GRIA2 antibody (150-250) [S2MR] (STJ11101312)
STJ11101312

GENERAL INFORMATION

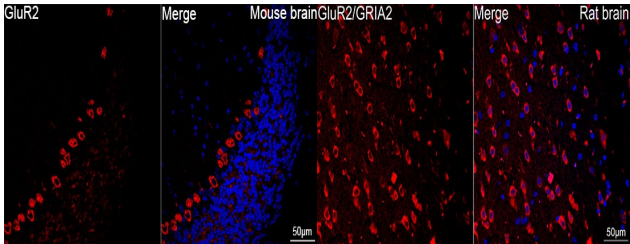
Product Type	Primary antibodies
Short Description	
Applications	WB/IHC-P/IF/ICC/ELISA
Host/Source	Rabbit
Reactivity	Human/Mouse/Rat

PRODUCT PROPERTIES

Clonality	Monoclonal
Clone ID	S2MR
Concentration	Lot specific
Conjugation	Unconjugated
Purification	Affinity purification
Dilution Range	WB:1:1000-1:6000 IHC-P:1:100-1:800 IF/ICC:1:100-1:1000 ELISA:Recommended starting concentration is 1 μ g/mL. Please optimize the concentration based on your specific assay requirements.
Formulation	PBS with 0.02% Sodium Azide, 0.05% BSA, 50% Glycerol, pH 7.3.
Isotype	IgG
Storage Instruction	Store at -20°C for up to 1 year from the date of receipt, and avoid repeat freeze-thaw cycles.

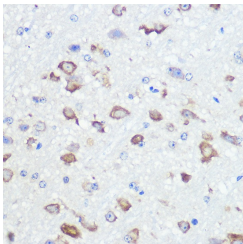
TARGET INFORMATION

Gene ID	2891
Gene Symbol	GRIA2
Uniprot ID	GRIA2_HUMAN
Immunogen	
Immunogen Region	150-250
Specificity	A synthetic peptide corresponding to a sequence within amino acids 150-250 of human GluR2/GRIA2 (P42262).
Immunogen Sequence	YLYDSDRGLSTLQAVLDSAA EKKWQVTAINVGNINNDKKD EMYRSLFQDLELKERRVIL DCERDKVNDIVDQVITIGKH VKGYHYIANLGFDTGDLK I

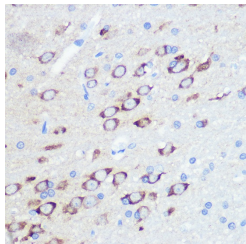


Confocal imaging of a paraffin-embedded Mouse brain tissue using A GluR2/GRIA2 Rabbit monoclonal antibody (STJ11101312, dilution 1:100) followed by a further incubation with Cy3 Goat Anti-Rabbit IgG (H+L) (dilution 1:500) (Red), DAPI was used for nuclear staining (Blue). Objective: 40x. Perform microwave antigen retrieval with 0.01 M citrate buffer (pH 6.0) prior to IF staining.

Confocal imaging of a paraffin-embedded Rat brain tissue using A GluR2/GRIA2 Rabbit monoclonal antibody (STJ11101312, dilution 1:200) followed by a further incubation with Cy3 Goat Anti-Rabbit IgG (H+L) (dilution 1:500) (Red), DAPI was used for nuclear staining (Blue). Objective: 40x. Perform microwave antigen retrieval with 0.01 M citrate buffer (pH 6.0) prior to IF staining.



Immunohistochemistry analysis of GluR2/GRIA2 in paraffin-embedded mouse brain using GluR2/GRIA2 Rabbit monoclonal antibody (STJ11101312) at dilution of 1:100 (40x lens). Perform microwave antigen retrieval with 10 mM PBS buffer pH 7.2 before commencing with immunohistochemistry staining protocol.



Immunohistochemistry analysis of GluR2/GRIA2 in paraffin-embedded rat brain using GluR2/GRIA2 Rabbit monoclonal antibody (STJ11101312) at dilution of 1:100 (40x lens). Perform microwave antigen retrieval with 10 mM PBS buffer pH 7.2 before commencing with immunohistochemistry staining protocol.

This product is suitable for in-vitro studies under the RESEARCH USE ONLY [RUO] licence. This product must not be used as for diagnostic or other medical purposes.
St John's Laboratory Ltd, Knowledge Dock Business Centre, University Way, London, E16 2RD | Tel: 0208 223 3081