

Anti-FABP1 antibody (1-100) [S3MR] (STJ11101293)

STJ11101293

GENERAL INFORMATION

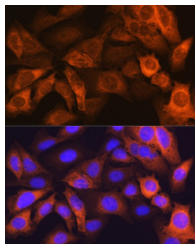
Product Type	Primary antibodies
Short Description	
Applications	WB/IF/CC/ELISA
Host/Source	Rabbit
Reactivity	Human/Mouse/Rat

PRODUCT PROPERTIES

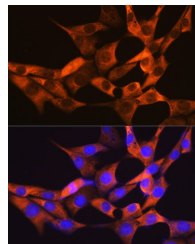
Clonality	Monoclonal
Clone ID	S3MR
Concentration	Lot specific
Conjugation	Unconjugated
Purification	Affinity purification
Dilution Range	WB:1:1000-1:6000 IF/CC:1:100-1:400 ELISA:Recommended starting concentration is 1 Mu g/mL. Please optimize the concentration based on your specific assay requirements.
Formulation	PBS with 0.02% Sodium Azide, 0.05% BSA, 50% Glycerol, pH 7.3.
Isotype	IgG
Storage Instruction	Store at -20°C for up to 1 year from the date of receipt, and avoid repeat freeze-thaw cycles.

TARGET INFORMATION

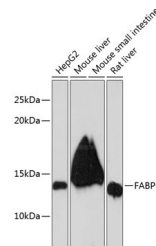
Gene ID	2168
Gene Symbol	FABP1
Uniprot ID	FABPL_HUMAN
Immunogen	
Immunogen Region	1-100
Specificity	A synthetic peptide corresponding to a sequence within amino acids 1-100 of human FABP1 (P07148). MSFSGKYQLSQENFEAFMK AIGLPEELIQKGKDIKGVSE IVQNGKHFKFTITAGSKVIQ NEFTVGEECELETMTGEKVK
Sequence	TVVQLEGDNKLVTTFKNIKS



Immunofluorescence analysis of U-2 OS cells using FABP1 Rabbit monoclonal antibody (STJ11101293) at dilution of 1:100 (40x lens). Blue: DAPI for nuclear staining.



Immunofluorescence analysis of NIH-3T3 cells using FABP1 Rabbit monoclonal antibody (STJ11101293) at dilution of 1:100 (40x lens). Blue: DAPI for nuclear staining.



Western blot analysis of extracts of various cell lines, using FABP1 Rabbit monoclonal antibody (STJ11101293) at 1/41000 dilution. Secondary antibody: HRP Goat Anti-Rabbit IgG (H+L) (STJS000856) at 1:10000 dilution. Lysates/proteins: 25 Mu g per lane. Blocking buffer: 3% nonfat dry milk in TBST. Detection: ECL Basic Kit. Exposure time: 60s.

This product is suitable for in-vitro studies under the RESEARCH USE ONLY [RUO] licence. This product must not be used as for diagnostic or other medical purposes.
St John's Laboratory Ltd, Knowledge Dock Business Centre, University Way, London, E16 2RD | Tel: 0208 223 3081