

# Anti-MBP antibody (161-304) [S5MR] (STJ11101285)

STJ11101285

## GENERAL INFORMATION

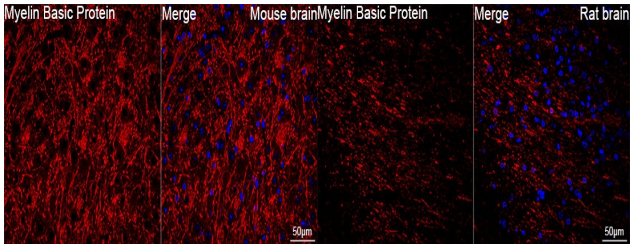
<b>Product Type</b>	Primary antibodies
<b>Short Description</b>	
<b>Applications</b>	WB/IF/ICC/ELISA
<b>Host/Source</b>	Rabbit
<b>Reactivity</b>	Mouse/Rat

## PRODUCT PROPERTIES

<b>Clonality</b>	Monoclonal
<b>Clone ID</b>	S5MR
<b>Concentration</b>	Lot specific
<b>Conjugation</b>	Unconjugated
<b>Purification</b>	Affinity purification
<b>Dilution Range</b>	WB:1:1000-1:6000 IF/ICC:1:200-1:2000
<b>Formulation</b>	ELISA:Recommended starting concentration is 1 Mu g/mL. Please optimize the concentration based on your specific assay requirements.
<b>Isotype</b>	PBS with 0.02% Sodium Azide, 0.05% BSA, 50% Glycerol, pH 7.3.
<b>Storage Instruction</b>	IgG Store at -20°C for up to 1 year from the date of receipt, and avoid repeat freeze-thaw cycles.

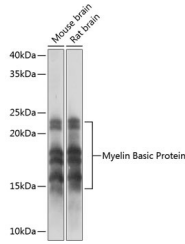
## TARGET INFORMATION

<b>Gene ID</b>	4155
<b>Gene Symbol</b>	MBP
<b>Uniprot ID</b>	MBP_HUMAN
<b>Immunogen</b>	
<b>Immunogen Region</b>	161-304
<b>Specificity</b>	Recombinant fusion protein containing a sequence corresponding to amino acids 161-304 of human Myelin Basic Protein (P02686).
<b>Immunogen Sequence</b>	GFLLPRHRDTGILDSIGRFFG GDRGAPKRGSGKDSHHPART AHYGLSPQKSHGRTQDENPV VHFFKNIVTPRTPPPSQGGK RGLSLSRFSWGAEGQRPFG YGGRASDYKSAHKGFGKVDA QGTLKIFKLGGDRSRSGSP MARR



Confocal imaging of A paraffin-embedded Mouse brain using A Myelin Basic Protein Rabbit monoclonal antibody (STJ11101285, dilution 1:200) followed by a further incubation with Cy3 Goat Anti-Rabbit IgG (H+L) (dilution 1:500) (Red). DAPI was used for nuclear staining (Blue). Objective: 40x. Perform microwave antigen retrieval with 0.01 M citrate buffer (pH 6.0) prior to IF staining.

Confocal imaging of A paraffin-embedded Rat brain using A Myelin Basic Protein Rabbit monoclonal antibody (STJ11101285, dilution 1:200) followed by a further incubation with Cy3 Goat Anti-Rabbit IgG (H+L) (dilution 1:500) (Red). DAPI was used for nuclear staining (Blue). Objective: 40x. Perform microwave antigen retrieval with 0.01 M citrate buffer (pH 6.0) prior to IF staining.



Western blot analysis of various lysates using Myelin Basic Protein Rabbit monoclonal antibody (STJ11101285) at 1:1000 dilution. Secondary antibody: HRP Goat Anti-Rabbit IgG (H+L) (STJS000856) at 1:10000 dilution. Lysates/proteins: 25 Mu g per lane. Blocking buffer: 3% nonfat dry milk in TBST. Detection: ECL Basic Kit. Exposure time: 1s.

This product is suitable for in-vitro studies under the RESEARCH USE ONLY [RUO] licence. This product must not be used as for diagnostic or other medical purposes.  
St John's Laboratory Ltd, Knowledge Dock Business Centre, University Way, London, E16 2RD | Tel: 0208 223 3081