

Anti-CDK9 antibody (273-372) [S0MR] (STJ11101280)

STJ11101280

GENERAL INFORMATION

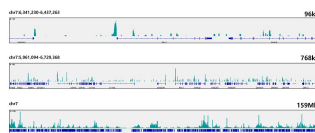
Product Type	Primary antibodies
Short Description	
Applications	WB/IHC-P/IF/ICC/IP/ELISA
Host/Source	Rabbit
Reactivity	Human/Mouse/Rat

PRODUCT PROPERTIES

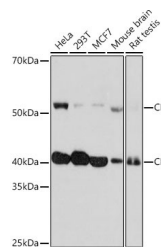
Clonality	Monoclonal
Clone ID	S0MR
Concentration	Lot specific
Conjugation	Unconjugated
Purification	Affinity purification
Dilution Range	WB:1:500-1:3000 IHC-P:1:200-1:2000 IF/ICC:1:50-1:400 IP:0.5 Mu g-4 Mu g antibody for 200 Mu g-400 Mu g extracts of whole cells ELISA:Recommended starting concentration is 1 Mu g/mL. Please optimize the concentration based on your spec
Formulation	PBS with 0.02% Sodium Azide, 0.05% BSA, 50% Glycerol, pH 7.3.
Isotype	IgG
Storage Instruction	Store at -20°C for up to 1 year from the date of receipt, and avoid repeat freeze-thaw cycles.

TARGET INFORMATION

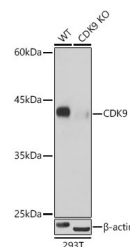
Gene ID	1025
Gene Symbol	CDK9
Uniprot ID	CDK9_HUMAN
Immunogen	
Immunogen Region	273-372
Specificity	A synthetic peptide corresponding to a sequence within amino acids 273-372 of human CDK9 (P50750).
Immunogen Sequence	RKVKDRLKAYVRDPYALDLI DKLLVLDPQAQRIDSDDALNH DFFWSDPMPSDLKGMMLSTHL TSMFEYLAPPRRKGSGQITQQ STNQSRNPATTNQTEFERVF



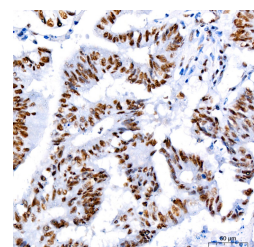
CUT&Tag was performed using the CUT&Tag Assay Kit (pAG-Tn5) for Illumina (RK20265) from 10⁶ K562 cells with 1 Mu g CDK9 rabbit monoclonal antibody (STJ11101280) along with a Goat Anti-rabbit IgG (H+L). The CUT&Tag results indicate the enrichment pattern of CDK9 in representative gene loci (RAC1), as shown in figure.



Western blot analysis of extracts of various cell lines, using CDK9 rabbit monoclonal antibody (STJ11101280) at 1:1000 dilution. Secondary antibody: HRP Goat Anti-rabbit IgG (H+L) (STJ5000856) at 1:10000 dilution. Lysates/proteins: 25 Mu g per lane. Blocking buffer: 3% non-fat dry milk in TBST. Detection: ECL Basic Kit. Exposure time: 5min.



Western blot analysis of extracts from wild type (WT) and CDK9 knockout (KO) 293T cells, using CDK9 antibody (STJ11101280) at 1:500 dilution. Secondary antibody: HRP Goat Anti-rabbit IgG (H+L) (STJ5000856) at 1:10000 dilution. Lysates/proteins: 25 Mu g per lane. Blocking buffer: 3% non-fat dry milk in TBST. Detection: ECL Basic Kit. Exposure time: 1s.



Immunohistochemistry analysis of paraffin-embedded human colon carcinoma using [KO Validated] CDK9 rabbit monoclonal antibody (STJ11101280) at dilution of 1:200 (40x lens). Perform high pressure antigen retrieval with 10 mM citrate buffer pH 6.0 before commencing with immunohistochemistry staining protocol.

This product is suitable for in-vitro studies under the RESEARCH USE ONLY [RUO] licence. This product must not be used as for diagnostic or other medical purposes.
St John's Laboratory Ltd, Knowledge Dock Business Centre, University Way, London, E16 2RD | Tel: 0208 223 3081