

Anti-IL1RN antibody (100-177) [S7MR] (STJ11101277)

GENERAL INFORMATION

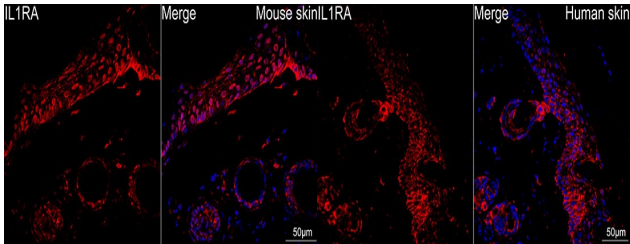
Product Type	Primary antibodies
Short Description	
Applications	WB/IF/ICC/ELISA
Host/Source	Rabbit
Reactivity	Human/Mouse/Rat

PRODUCT PROPERTIES

Clonality	Monoclonal
Clone ID	S7MR
Concentration	Lot specific
Conjugation	Unconjugated
Purification	Affinity purification
Dilution Range	WB:1:1000-1:6000 IF/ICC:1:100-1:800 ELISA:Recommended starting concentration is 1 Mu g/mL. Please optimize the concentration based on your specific assay requirements.
Formulation	PBS with 0.02% Sodium Azide, 0.05% BSA, 50% Glycerol, pH 7.3.
Isotype	IgG
Storage Instruction	Store at -20°C for up to 1 year from the date of receipt, and avoid repeat freeze-thaw cycles.

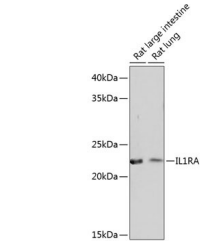
TARGET INFORMATION

Gene ID	3557
Gene Symbol	IL1RN
Uniprot ID	IL1RA_HUMAN
Immunogen	
Immunogen Region	100-177
Specificity	Recombinant fusion protein containing a sequence corresponding to amino acids 100-177 of human IL1RA (NP_776214.1)
Immunogen Sequence	ETRLQLEAVNITDLSNRKQ DKRFARIRSDSGPTTSFESA ACPGWFLCTAMEADQPVSILT NMPDEGVMVTKFYFQEDE

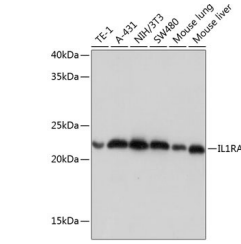


Confocal imaging of mouse tail ear using IL1RA Rabbit monoclonal antibody (STJ11101277, dilution 1:100) (Red). DAPI was used for nuclear staining (blue). Objective: 60x.

Confocal imaging of human skin using IL1RA Rabbit monoclonal antibody (STJ11101277, dilution 1:100) (Red). DAPI was used for nuclear staining (blue). Objective: 60x.



Western blot analysis of various lysates using IL1RA Rabbit monoclonal antibody (STJ11101277) at 1:1000 dilution. Secondary antibody: HRP Goat Anti-Rabbit IgG (H+L) (STJSD00856) at 1:10000 dilution. Lysates/proteins: 25 Mu g per lane. Blocking buffer: 3% nonfat dry milk in TBST. Detection: ECL Basic Kit. Exposure time: 10s.



Western blot analysis of various lysates using IL1RA Rabbit monoclonal antibody (STJ11101277) at 1:1000 dilution. Secondary antibody: HRP Goat Anti-Rabbit IgG (H+L) (STJSD00856) at 1:10000 dilution. Lysates/proteins: 25 Mu g per lane. Blocking buffer: 3% nonfat dry milk in TBST. Detection: ECL Basic Kit. Exposure time: 1s.

This product is suitable for in-vitro studies under the RESEARCH USE ONLY [RUO] licence. This product must not be used as for diagnostic or other medical purposes.
St John's Laboratory Ltd, Knowledge Dock Business Centre, University Way, London, E16 2RD | Tel: 0208 223 3081