

Anti-MMP11 antibody (389-488) [S6MR] (STJ11101276)

STJ11101276

GENERAL INFORMATION

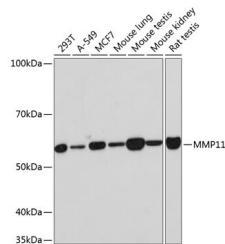
Product Type	Primary antibodies
Short Description	
Applications	WB/ELISA
Host/Source	Rabbit
Reactivity	Human/Mouse/Rat

PRODUCT PROPERTIES

Clonality	Monoclonal
Clone ID	S6MR
Concentration	Lot specific
Conjugation	Unconjugated
Purification	Affinity purification
Dilution Range	WB: 1:1000-1:4000 ELISA: Recommended starting concentration is 1 µg/mL. Please optimize the concentration based on your specific assay requirements.
Formulation	PBS with 0.02% Sodium Azide, 0.05% BSA, 50% Glycerol, pH 7.3.
Isotype	IgG
Storage	Store at -20°C for up to 1 year from the date of receipt, and avoid repeat freeze-thaw cycles.
Instruction	

TARGET INFORMATION

Gene ID	4320
Gene Symbol	MMP11
Uniprot ID	MMP11_HUMAN
Immunogen	
Immunogen	389-488
Region	
Specificity	A synthetic peptide corresponding to a sequence within amino acids 389-488 of human MMP11 (P24347).
Immunogen	AALVWGPEKNKIYFFRGRDY WRFHPSTRRVDSVPVRRATD WRGVPSEIDAAFQDADGYAY FLRGRLYWKFDPAVKVKALEG
Sequence	FPRLVGPDPFFGCAEPANTFL



Western blot analysis of extracts of various cell lines, using MMP11 Rabbit monoclonal antibody (STJ11101276) at 10%1000 dilution. Secondary antibody: HRP Goat Anti-Rabbit IgG (H+L) (STJS000856) at 1:10000 dilution. Lysates/proteins: 25 µg per lane. Blocking buffer: 3% nonfat dry milk in TBST. Detection: ECL Basic Kit. Exposure time: 30s.

This product is suitable for in-vitro studies under the RESEARCH USE ONLY [RUO] licence. This product must not be used as for diagnostic or other medical purposes.
St John's Laboratory Ltd, Knowledge Dock Business Centre, University Way, London, E16 2RD | Tel: 0208 223 3081