

Anti-FBL antibody (222-321) [S8MR] (STJ11101258)
STJ11101258

GENERAL INFORMATION

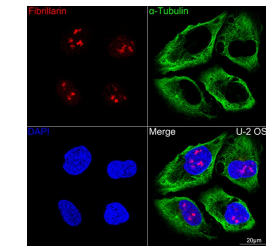
Product Type	Primary antibodies
Short Description	
Applications	WB/IF/ICC/IP/ELISA
Host/Source	Rabbit
Reactivity	Human/Mouse/Rat

PRODUCT PROPERTIES

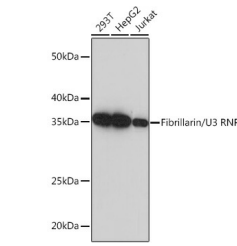
Clonality	Monoclonal
Clone ID	S8MR
Concentration	Lot specific
Conjugation	Unconjugated
Purification	Affinity purification
Dilution Range	WB:1:1000-1:10000 IF/ICC:1:100-1:1000 IP:0.5 Mu g-4 Mu g antibody for 200 Mu g-400 Mu g extracts of whole cells ELISA:Recommended starting concentration is 1 Mu g/mL. Please optimize the concentration based on your specific assay requirem
Formulation	PBS with 0.02% Sodium Azide, 0.05% BSA, 50% Glycerol, pH 7.3.
Isotype	IgG
Storage Instruction	Store at -20°C for up to 1 year from the date of receipt, and avoid repeat freeze-thaw cycles.

TARGET INFORMATION

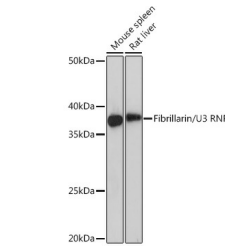
Gene ID	2091
Gene Symbol	FBL
Uniprot ID	FBRL_HUMAN
Immunogen	
Immunogen Region	222-321
Specificity	A synthetic peptide corresponding to a sequence within amino acids 222-321 of human Fibrillarin/U3 RNP (P22087).
Immunogen Sequence	KYRMLIAMVDVIFADVAQPD QTRIVALNAHTFLRNGGHFV ISIKANCIDSTASAEVAFAS EVKKMQQENMKPQEQLTLEP YERDHAVVVGYYRPPPKVKN



Confocal imaging of U-2 OS cells using Fibrillarin/U3 RNP Rabbit monoclonal antibody (STJ11101258, dilution 1:100) (Red). The cells were counterstained with Alpha-Tubulin Mouse monoclonal antibody (dilution 1:400) (Green). DAPI was used for nuclear staining (blue). Objective: 60x.



Western blot analysis of various lysates using Fibrillarin/U3 RNP Rabbit monoclonal antibody (STJ11101258) at 10x5000 dilution. Secondary antibody: HRP Goat Anti-Rabbit IgG (H+L) (STJS000856) at 1:10000 dilution. Lysates/proteins: 25 Mu g per lane. Blocking buffer: 3% nonfat dry milk in TBST. Detection: ECL Basic Kit. Exposure time: 5s.



Western blot analysis of various lysates using Fibrillarin/U3 RNP Rabbit monoclonal antibody (STJ11101258) at 10x1000 dilution. Secondary antibody: HRP Goat Anti-Rabbit IgG (H+L) (STJS000856) at 1:10000 dilution. Lysates/proteins: 25 Mu g per lane. Blocking buffer: 3% nonfat dry milk in TBST. Detection: ECL Basic Kit. Exposure time: 10s.

This product is suitable for in-vitro studies under the RESEARCH USE ONLY [RUO] licence. This product must not be used as for diagnostic or other medical purposes.
St John's Laboratory Ltd, Knowledge Dock Business Centre, University Way, London, E16 2RD | Tel: 0208 223 3081