

Anti-IGF1 antibody (70-150) [S7MR] (STJ11101257)
STJ11101257

GENERAL INFORMATION

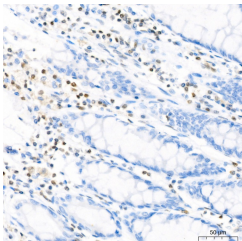
Product Type	Primary antibodies
Short Description	
Applications	IHC-P/ELISA
Host/Source	Rabbit
Reactivity	Human/Mouse

PRODUCT PROPERTIES

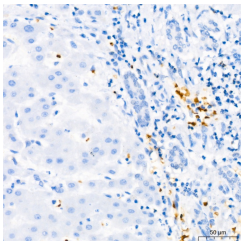
Clonality	Monoclonal
Clone ID	S7MR
Concentration	Lot specific
Conjugation	Unconjugated
Purification	Affinity purification
Dilution Range	IHC-P:1:50-1:200 ELISA:Recommended starting concentration is 1 µg/mL. Please optimize the concentration based on your specific assay requirements.
Formulation	PBS with 0.02% Sodium Azide, 0.05% BSA, 50% Glycerol, pH 7.3.
Isotype	IgG
Storage Instruction	Store at -20°C for up to 1 year from the date of receipt, and avoid repeat freeze-thaw cycles.

TARGET INFORMATION

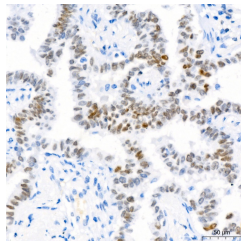
Gene ID	3479
Gene Symbol	IGF1
Uniprot ID	IGF1_HUMAN
Immunogen	
Immunogen Region	70-150
Specificity	A synthetic peptide corresponding to a sequence within amino acids 70-150 of human IGF1 (P05019).
Immunogen Sequence	GFYFNKPTGYGSSRRAPQT GIVDECCFRSCDLRRLEMYC APLKPAKSARSVRAQRHTDM PKTQKYQPPSTNKNTKSQRR K



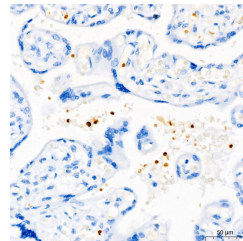
Immunohistochemistry analysis of paraffin-embedded human colon using IGF1 rabbit monoclonal antibody (STJ11101257) at dilution of 1:200 (40x lens). Perform high pressure antigen retrieval with 10 mM Tris/EDTA buffer pH 9.0 before commencing with immunohistochemistry staining protocol.



Immunohistochemistry analysis of paraffin-embedded human liver using IGF1 rabbit monoclonal antibody (STJ11101257) at dilution of 1:200 (40x lens). Perform high pressure antigen retrieval with 10 mM Tris/EDTA buffer pH 9.0 before commencing with immunohistochemistry staining protocol.



Immunohistochemistry analysis of paraffin-embedded Human lung adenocarcinoma using IGF1 rabbit monoclonal antibody (STJ11101257) at dilution of 1:200 (40x lens). Perform high pressure antigen retrieval with 10 mM Tris/EDTA buffer pH 9.0 before commencing with immunohistochemistry staining protocol.



Immunohistochemistry analysis of paraffin-embedded human placenta using IGF1 rabbit monoclonal antibody (STJ11101257) at dilution of 1:200 (40x lens). Perform high pressure antigen retrieval with 10 mM Tris/EDTA buffer pH 9.0 before commencing with immunohistochemistry staining protocol.

This product is suitable for in-vitro studies under the RESEARCH USE ONLY [RUO] licence. This product must not be used as for diagnostic or other medical purposes.
St John's Laboratory Ltd, Knowledge Dock Business Centre, University Way, London, E16 2RD | Tel: 0208 223 3081