

Anti-HSPD1 antibody (350-450) [S1MR] (STJ11101241)

STJ11101241

GENERAL INFORMATION

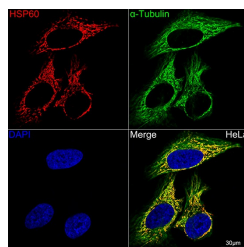
Product Type	Primary antibodies
Short Description	
Applications	WB/IHC-P/IF/ICC/ELISA
Host/Source	Rabbit
Reactivity	Human/Mouse/Rat/Wheat

PRODUCT PROPERTIES

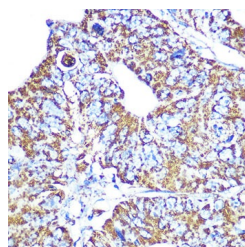
Clonality	Monoclonal
Clone ID	S1MR
Concentration	Lot specific
Conjugation	Unconjugated
Purification	Affinity purification
Dilution Range	WB:1:5000-1:30000 IHC-P:1:100-1:2000 IF/ICC:1:100-1:1000 ELISA:Recommended starting concentration is 1 Mu g/mL. Please optimize the concentration based on your specific assay requirements.
Formulation	PBS with 0.02% Sodium Azide, 0.05% BSA, 50% Glycerol, pH 7.3.
Isotype	IgG
Storage Instruction	Store at -20°C for up to 1 year from the date of receipt, and avoid repeat freeze-thaw cycles.

TARGET INFORMATION

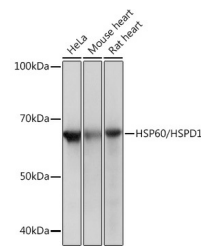
Gene ID	3329
Gene Symbol	HSPD1
Uniprot ID	CH60_HUMAN
Immunogen	
Immunogen Region	350-450
Specificity	A synthetic peptide corresponding to a sequence within amino acids 350-450 of human HSP60/HSPD1 (P10809).
Immunogen Sequence	VTKDDAMLLKGKGDKAQIEK RIQEIEQLDVTTSEYEKEK LNERLAKLSDGVAVLKVGGT SDVEVNEKKDRVTDALNATR AAVEEGIVLGGGCALLRCIP A



Confocal imaging of HeLa cells using HSP60/HSPD1 Rabbit monoclonal antibody (STJ11101241, dilution 1:100) (Red). The cells were counterstained with Alpha-Tubulin Rabbit monoclonal antibody (dilution 1:100) (Green). DAPI was used for nuclear staining (blue). Objective: 60x.



Immunohistochemistry analysis of paraffin-embedded human colon carcinoma using HSP60/HSPD1 Rabbit monoclonal antibody (STJ11101241) at dilution of 1:100 (40x lens). Perform microwave antigen retrieval with 10 mM PBS buffer pH 7. 2 before commencing with immunohistochemistry staining protocol.



Western blot analysis of extracts of various cell lines, using HSP60/HSPD1 Rabbit monoclonal antibody (STJ11101241) at 11x1000 dilution. Secondary antibody: HRP Goat Anti-Rabbit IgG (H+L) (STJS000856) at 1:10000 dilution. Lysates/proteins: 25 Mu g per lane. Blocking buffer: 3% nonfat dry milk in TBS1. Detection: ECL Basic Kit. Exposure time: 1s.

This product is suitable for in-vitro studies under the RESEARCH USE ONLY [RUO] licence. This product must not be used as for diagnostic or other medical purposes.
St John's Laboratory Ltd, Knowledge Dock Business Centre, University Way, London, E16 2RD | Tel: 0208 223 3081