

Anti-PBRM1 antibody (530-680) [S4MR] (STJ11101234)
STJ11101234

GENERAL INFORMATION

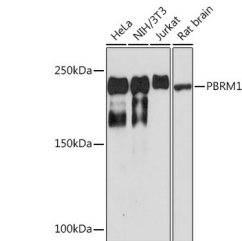
Product Type	Primary antibodies
Short Description	
Applications	WB/IHC-P/ELISA
Host/Source	Rabbit
Reactivity	Human/Mouse/Rat

PRODUCT PROPERTIES

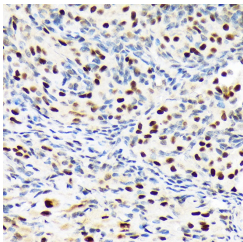
Clonality	Monoclonal
Clone ID	S4MR
Concentration	Lot specific
Conjugation	Unconjugated
Purification	Affinity purification
Dilution Range	WB:1:1000-1:2000 IHC-P:1:200-1:800 ELISA:Recommended starting concentration is 1 μ g/mL. Please optimize the concentration based on your specific assay requirements.
Formulation	PBS with 0.02% Sodium Azide, 0.05% BSA, 50% Glycerol, pH 7.3.
Isotype	IgG
Storage Instruction	Store at -20°C for up to 1 year from the date of receipt, and avoid repeat freeze-thaw cycles.

TARGET INFORMATION

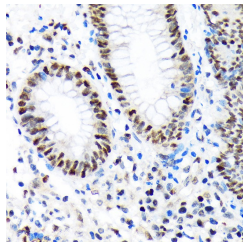
Gene ID	55193
Gene Symbol	PBRM1
Uniprot ID	PB1_HUMAN
Immunogen	
Immunogen Region	530-680
Specificity	Recombinant fusion protein containing a sequence corresponding to amino acids 530-680 of human PBRM1 (Q86U86).
Immunogen Sequence	VLEAREPGSGRRLCDLFMVK PSKKDYPDYYKILEPMDLK IIEHNIRNDKYAGEEGMIED MKLMFRNARHYNEEGSQVYN DAHILEKLLKEKRKELGPL DDDDMASPKLKSRSKSGISP KSKYMTMPMQKLNVEYEA VKNYTDKRGRRLL



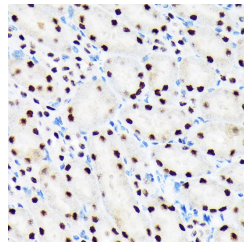
Western blot analysis of extracts of various cell lines, using PBRM1 rabbit monoclonal antibody (STJ11101234) at 1:1000 dilution. Secondary antibody: HRP Goat Anti-rabbit IgG (H+L) (STJ5000856) at 1:10000 dilution. Lysates/proteins: 25 μ g per lane. Blocking buffer: 3% non-fat dry milk in TBST. Detection: ECL Basic Kit. Exposure time: 3min.



Immunohistochemistry analysis of paraffin-embedded rat ovary using PBRM1 rabbit monoclonal antibody (STJ11101234) at dilution of 1:100 (40x lens). Perform microwave antigen retrieval with 10 mM Tris/EDTA buffer pH 9.0 before commencing with immunohistochemistry staining protocol.



Immunohistochemistry analysis of paraffin-embedded human appendix using PBRM1 rabbit monoclonal antibody (STJ11101234) at dilution of 1:100 (40x lens). Perform microwave antigen retrieval with 10 mM Tris/EDTA buffer pH 9.0 before commencing with immunohistochemistry staining protocol.



Immunohistochemistry analysis of paraffin-embedded mouse kidney using PBRM1 rabbit monoclonal antibody (STJ11101234) at dilution of 1:100 (40x lens). Perform microwave antigen retrieval with 10 mM Tris/EDTA buffer pH 9.0 before commencing with immunohistochemistry staining protocol.

This product is suitable for in-vitro studies under the RESEARCH USE ONLY [RUO] licence. This product must not be used as for diagnostic or other medical purposes.
St John's Laboratory Ltd, Knowledge Dock Business Centre, University Way, London, E16 2RD | Tel: 0208 223 3081