

## Anti-ALDH1A1 antibody (250-350) [S1MR] (STJ11101231)

STJ11101231

### GENERAL INFORMATION

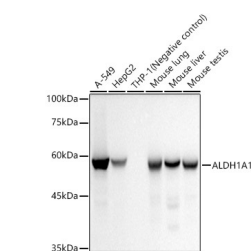
<b>Product Type</b>	Primary antibodies
<b>Short Description</b>	
<b>Applications</b>	WB/IF/ICC/IP/ELISA
<b>Host/Source</b>	Rabbit
<b>Reactivity</b>	Human/Mouse/Rat

### PRODUCT PROPERTIES

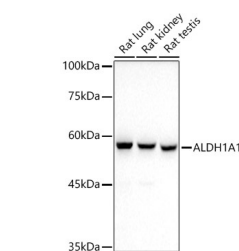
<b>Clonality</b>	Monoclonal
<b>Clone ID</b>	S1MR
<b>Concentration</b>	Lot specific
<b>Conjugation</b>	Unconjugated
<b>Purification</b>	Affinity purification
<b>Dilution Range</b>	WB:1:50000-1:200000 IF/ICC:1:100-1:800 IP:0.5 Mu g-4 Mu g antibody for 200 Mu g-400 Mu g extracts of whole cells ELISA:Recommended starting concentration is 1 Mu g/mL. Please optimize the concentration based on your specific assay require
<b>Formulation</b>	PBS with 0.05% Proclin300, 0.05% BSA, 50% Glycerol, pH 7.3.
<b>Isotype</b>	IgG
<b>Storage Instruction</b>	Store at -20°C for up to 1 year from the date of receipt, and avoid repeat freeze-thaw cycles.

### TARGET INFORMATION

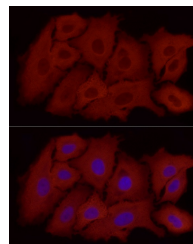
<b>Gene ID</b>	216
<b>Gene Symbol</b>	ALDH1A1
<b>Uniprot ID</b>	AL1A1_HUMAN
<b>Immunogen</b>	
<b>Immunogen Region</b>	250-350
<b>Specificity</b>	A synthetic peptide corresponding to a sequence within amino acids 250-350 of human ALDH1A1 (NP_000680.2).
<b>Immunogen Sequence</b>	VGKLIKEAAGKSNLKRVTLE LGGKSPCIVLADADLDNAVE FAHHGVFYHQGCCIAASRI FVEESYDEFVRRSVERAKK YILGNPLTPGVGTQGPQIDKE Q



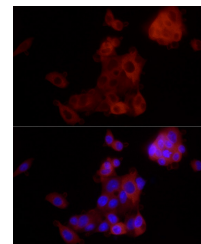
Western blot analysis of various lysates, using ALDH1A1 rabbit monoclonal antibody (STJ11101231) at 1:100000 dilution. Secondary antibody: HRP Goat Anti-rabbit IgG (H+L) (STJS000856) at 1:10000 dilution. Lysates/proteins: 25 Mu g per lane. Blocking buffer: 3% non-fat dry milk in TBST. Detection: ECL Basic Kit. Exposure time: 10s.



Western blot analysis of various lysates, using ALDH1A1 rabbit monoclonal antibody (STJ11101231) at 1:100000 dilution. Secondary antibody: HRP Goat Anti-rabbit IgG (H+L) (STJS000856) at 1:10000 dilution. Lysates/proteins: 25 Mu g per lane. Blocking buffer: 3% non-fat dry milk in TBST. Detection: ECL Basic Kit. Exposure time: 90s.



Immunofluorescence analysis of A-549 using ALDH1A1 rabbit monoclonal antibody (STJ11101231) at dilution of 1:800 (40x lens). Blue: DAPI for nuclear staining.



Immunofluorescence analysis of HepG2 using ALDH1A1 rabbit monoclonal antibody (STJ11101231) at dilution of 1:800 (40x lens). Blue: DAPI for nuclear staining.

This product is suitable for in-vitro studies under the RESEARCH USE ONLY [RUO] licence. This product must not be used as for diagnostic or other medical purposes.  
St John's Laboratory Ltd, Knowledge Dock Business Centre, University Way, London, E16 2RD | Tel: 0208 223 3081