

Anti-MST1 antibody (1-100) [S7MR] (STJ11101227)

STJ11101227

GENERAL INFORMATION

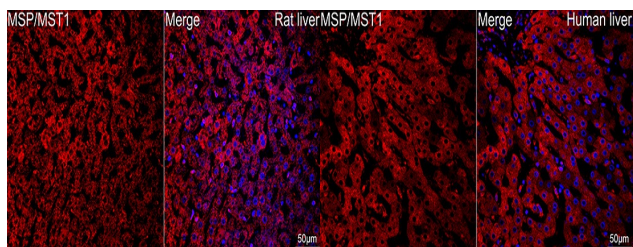
| | |
|--------------------------|-----------------------|
| Product Type | Primary antibodies |
| Short Description | |
| Applications | WB/IHC-P/IF/ICC/ELISA |
| Host/Source | Rabbit |
| Reactivity | Human/Mouse/Rat |

PRODUCT PROPERTIES

| | |
|----------------------------|---|
| Clonality | Monoclonal |
| Clone ID | S7MR |
| Concentration | Lot specific |
| Conjugation | Unconjugated |
| Purification | Affinity purification |
| Dilution Range | WB:1:500-1:2000 IHC-P:1:50-1:200 IF/ICC:1:50-1:200 ELISA:Recommended starting concentration is 1 Mu g/mL. Please optimize the concentration based on your specific assay requirements. |
| Formulation | PBS with 0.02% Sodium Azide, 0.05% BSA, 50% Glycerol, pH 7.3. |
| Isotype | IgG |
| Storage Instruction | Store at -20°C for up to 1 year from the date of receipt, and avoid repeat freeze-thaw cycles. |

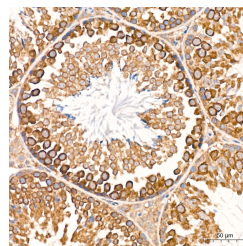
TARGET INFORMATION

| | |
|---------------------------|---|
| Gene ID | 4485 |
| Gene Symbol | MST1 |
| Uniprot ID | HGFL_HUMAN |
| Immunogen | |
| Immunogen Region | 1-100 |
| Specificity | A synthetic peptide corresponding to a sequence within amino acids 1-100 of human MSP/MST1 (NP_066278.3). |
| Immunogen Sequence | MGWLPLLLLTQCLGVPGQR SPLNDFQVLRGTELQHLHA VVPGPWQEDVDAEECAGRC GPLMDCRAFHYNVSSHGCQL LPWTQHSPHTRLRRSGRCDL |

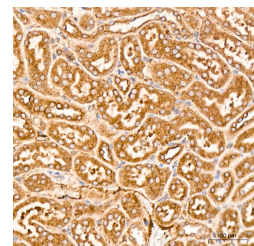


Confocal imaging of a paraffin-embedded Rat liver tissue using a MSP/MST1 Rabbit monoclonal antibody (STJ11101227, dilution 1:100) followed by a further incubation with Cy3 Goat Anti-Rabbit IgG (H+L) (dilution 1:500) (Red). DAPI was used for nuclear staining (Blue). Objective: 40x. Perform high pressure antigen retrieval with 0.01 M citrate buffer (pH 6.0) prior to IF staining.

Confocal imaging of a paraffin-embedded Human liver tissue using a MSP/MST1 Rabbit monoclonal antibody (STJ11101227, dilution 1:100) followed by a further incubation with Cy3 Goat Anti-Rabbit IgG (H+L) (dilution 1:500) (Red). DAPI was used for nuclear staining (Blue). Objective: 40x. Perform high pressure antigen retrieval with 0.01 M citrate buffer (pH 6.0) prior to IF staining.



Immunohistochemistry analysis of MSP/MST1 in paraffin-embedded mouse testis tissue using MSP/MST1 Rabbit monoclonal antibody (STJ11101227) at a dilution of 1:200 (40x lens). High pressure antigen retrieval was performed with 0.01 M citrate buffer (pH 6.0) prior to immunohistochemistry staining.



Immunohistochemistry analysis of MSP/MST1 in paraffin-embedded mouse kidney tissue using MSP/MST1 Rabbit monoclonal antibody (STJ11101227) at a dilution of 1:200 (40x lens). High pressure antigen retrieval was performed with 0.01 M citrate buffer (pH 6.0) prior to immunohistochemistry staining.

This product is suitable for in-vitro studies under the RESEARCH USE ONLY [RUO] licence. This product must not be used as for diagnostic or other medical purposes.

St John's Laboratory Ltd, Knowledge Dock Business Centre, University Way, London, E16 2RD | Tel: 0208 223 3081