

Anti-MMP14 antibody (100-200) [S4MR] (STJ11101224)

STJ11101224

GENERAL INFORMATION

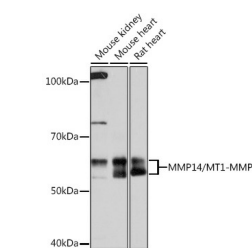
Product Type	Primary antibodies
Short Description	
Applications	WB/IHC-P/FC/ELISA
Host/Source	Rabbit
Reactivity	Human/Mouse/Rat

PRODUCT PROPERTIES

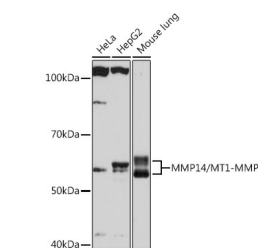
Clonality	Monoclonal
Clone ID	S4MR
Concentration	Lot specific
Conjugation	Unconjugated
Purification	Affinity purification
Dilution Range	WB:1:500-1:2000 IHC-P: 1:50-1:200 FC: 1:100-1:500 ELISA:Recommended starting concentration is 1 Mu g/mL. Please optimize the concentration based on your specific assay requirements.
Formulation	PBS with 0.02% Sodium Azide, 0.05% BSA, 50% Glycerol, pH 7.3.
Isotype	IgG
Storage Instruction	Store at-20°C for up to 1 year from the date of receipt, and avoid repeat freeze-thaw cycles.

TARGET INFORMATION

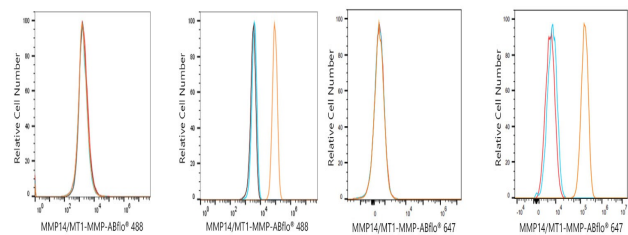
Gene ID	4323
Gene Symbol	MMP14
Uniprot ID	MMP14_HUMAN
Immunogen	
Immunogen Region	100-200
Specificity	A synthetic peptide corresponding to a sequence within amino acids 100-200 of human MMP14/MMP14/MT1-MMP (P50281). GAEIKANVRRKRYAIQGLKW QHNEITFCIQNYTPKVGGEYA TYEAIKAFRVWESATPLRF REVPLYAYIREGHEKQADIMI
Immunogen Sequence	FFAEGFHGDSTPFDGEGGFL A



Western blot analysis of extracts of various cell lines, using MMP14/MMP14/MT1-MMP rabbit monoclonal antibody (STJ11101224) at 1:1000 dilution. Secondary antibody: HRP Goat Anti-rabbit IgG (H+L) (STJS000856) at 1:10000 dilution. Lysates/proteins: 25 Mu g per lane. Blocking buffer: 3% non-fat dry milk in TBST. Detection: ECL Basic Kit. Exposure time: 90s.



Western blot analysis of extracts of various cell lines, using MMP14/MMP14/MT1-MMP rabbit monoclonal antibody (STJ11101224) at 1:1000 dilution. Secondary antibody: HRP Goat Anti-rabbit IgG (H+L) (STJS000856) at 1:10000 dilution. Lysates/proteins: 25 Mu g per lane. Blocking buffer: 3% non-fat dry milk in TBST. Detection: ECL Basic Kit. Exposure time: 10s.



Flow cytometry: 1X10⁶ MCF7 cells (negative control, left) and HT-1080 (right) cells were intracellularly-stained with MMP14/MT1-MMP rabbit monoclonal antibody (STJ11101224, 2 Mu g/mL, orange line) or ABR0488 rabbit IgG isotype control (2 Mu g/mL, blue line), followed by Alexa Fluor[®] 488 conjugated goat anti-rabbit polyclonal antibody staining. Non-fluorescently stained cells were used as blank control (red line).

Flow cytometry: 1X10⁶ MCF7 cells (negative control, left) and HT-1080 (right) cells were intracellularly-stained with MMP14/MT1-MMP rabbit monoclonal antibody (STJ11101224, 2 Mu g/mL, orange line) or ABR0647 rabbit IgG isotype control (2 Mu g/mL, blue line), followed by Alexa Fluor[®] 488 conjugated goat anti-rabbit polyclonal antibody staining. Non-fluorescently stained cells were used as blank control (red line).

This product is suitable for in-vitro studies under the RESEARCH USE ONLY [RUO] licence. This product must not be used as for diagnostic or other medical purposes.
St John's Laboratory Ltd, Knowledge Dock Business Centre, University Way, London, E16 2RD | Tel: 0208 223 3081