

Anti-KRT4 antibody (1-100) [S1MR] (STJ11101221)

STJ11101221

GENERAL INFORMATION

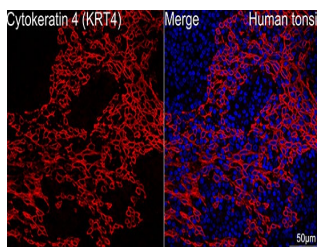
Product Type	Primary antibodies
Short Description	
Applications	WB/IHC-P/IF/ICC/ELISA
Host/Source	Rabbit
Reactivity	Human/Mouse/Rat

PRODUCT PROPERTIES

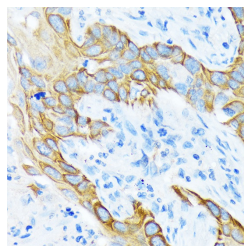
Clonality	Monoclonal
Clone ID	S1MR
Concentration	Lot specific
Conjugation	Unconjugated
Purification	Affinity purification
Dilution Range	WB:1:1000-1:4000 IHC-P:1:500-1:2000 IF/ICC:1:100-1:400 ELISA:Recommended starting concentration is 1 µg/mL. Please optimize the concentration based on your specific assay requirements.
Formulation	PBS with 0.02% Sodium Azide, 0.05% BSA, 50% Glycerol, pH 7.3.
Isotype	IgG
Storage	Store at -20°C for up to 1 year from the date of receipt, and avoid repeat freeze-thaw cycles.
Instruction	

TARGET INFORMATION

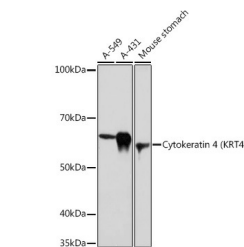
Gene ID	3851
Gene Symbol	KRT4
Uniprot ID	K2C4_HUMAN
Immunogen	
Immunogen	1-100
Region	
Specificity	A synthetic peptide corresponding to a sequence within amino acids 1-100 of human Cytokeratin 4 (KRT4) (P19013).
Immunogen	MIARQQCVRGGPRGFSCGSA IVGGGKRGAFSSVMSGGAG RCSSGGFGSRSLYNLRGNKS ISMSVAGSRQGACFGGAGGF
Sequence	GTGGFGGGFGGSFSGKGGPG



Confocal imaging of human tonsil using Cytokeratin 4 (KRT4) Rabbit monoclonal antibody (STJ11101221, dilution 1:100) (Red), DAPI was used for nuclear staining (blue). Objective: 40x. Perform high pressure antigen retrieval with 10 mM citrate buffer pH 6.0 before commencing with IF staining protocol.



Immunohistochemistry analysis of paraffin-embedded human lung squamous carcinoma tissue using Cytokeratin 4 (KRT4) Rabbit monoclonal antibody (STJ11101221) at dilution of 1:100 (40x lens). Perform microwave antigen retrieval with 10 mM Tris/EDTA buffer pH 9.0 before commencing with immunohistochemistry staining protocol.



Western blot analysis of extracts of various cell lines, using Cytokeratin 4 (KRT4) Rabbit monoclonal antibody (STJ11101221) at 1:1000 dilution. Secondary antibody: HRP Goat Anti-Rabbit IgG (H+L) (STJS000856) at 1:10000 dilution. Lysates/proteins: 25 µg per lane. Blocking buffer: 3% nonfat dry milk in TBST. Detection: ECL Basic Kit. Exposure time: 30s.

This product is suitable for in-vitro studies under the RESEARCH USE ONLY [RUO] licence. This product must not be used as for diagnostic or other medical purposes.
St John's Laboratory Ltd, Knowledge Dock Business Centre, University Way, London, E16 2RD | Tel: 0208 223 3081