

Anti-PIK3R3 antibody (300-388) (STJ11101208)

STJ11101208

GENERAL INFORMATION

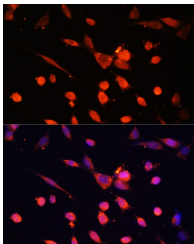
Product Type	Primary antibodies
Short Description	
Applications	WB/IF/ICC/ELISA
Host/Source	Rabbit
Reactivity	Human/Mouse/Rat

PRODUCT PROPERTIES

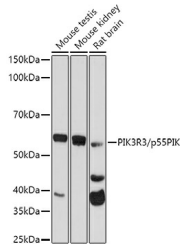
Clonality	Polyclonal
Clone ID	
Concentration	Lot specific
Conjugation	Unconjugated
Purification	Affinity purification
Dilution Range	WB:1:100-1:500 IF/ICC:1:50-1:100 ELISA:Recommended starting concentration is 1 μ g/mL. Please optimize the concentration based on your specific assay requirements.
Formulation	PBS with 0.01% Thimerosal, 50% Glycerol, pH 7.3.
Isotype	IgG
Storage Instruction	Store at -20°C for up to 1 year from the date of receipt, and avoid repeat freeze-thaw cycles.

TARGET INFORMATION

Gene ID	8503
Gene Symbol	PIK3R3
Uniprot ID	P55G_HUMAN
Immunogen	
Immunogen Region	300-388
Specificity	A synthetic peptide corresponding to a sequence within amino acids 300-388 of human PIK3R3/p55PIK (NP_003620.3). PDLIQLRKIRDQHLVWLNHK GVRQKRLNVWLGIKNEDADE NYFINEEDNLPHYDEKTWF VEDINRVQAEDLLYGKPDGA
Immunogen Sequence	FLIRESSKK



Immunofluorescence analysis of NIH-3T3 cells using PIK3R3/p55PIK Rabbit polyclonal antibody (STJ11101208) at dilution of 1:100. Secondary antibody: Cy3 Goat Anti-Rabbit IgG (H+L) at 1:500 dilution. Blue: DAPI for nuclear staining.



Western blot analysis of various lysates using PIK3R3/p55PIK Rabbit polyclonal antibody (STJ11101208) at 1:500 dilution. Secondary antibody: HRP Goat Anti-Rabbit IgG (H+L) (STJ3000856) at 1:10000 dilution. Lysates/proteins: 25 μ g per lane. Blocking buffer: 3% nonfat dry milk in TBST. Detection: ECL Basic Kit. Exposure time: 90s.

This product is suitable for in-vitro studies under the RESEARCH USE ONLY [RUO] licence. This product must not be used as for diagnostic or other medical purposes.
St John's Laboratory Ltd, Knowledge Dock Business Centre, University Way, London, E16 2RD | Tel: 0208 223 3081