

Anti-KANK1 antibody (900-1000) (STJ11101206)

STJ11101206

GENERAL INFORMATION

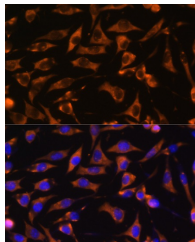
Product Type	Primary antibodies
Short Description	
Applications	IF/ICC/ELISA
Host/Source	Rabbit
Reactivity	Mouse

PRODUCT PROPERTIES

Clonality	Polyclonal
Clone ID	
Concentration	Lot specific
Conjugation	Unconjugated
Purification	Affinity purification
Dilution Range	IF/ICC:1:50-1:200 ELISA:Recommended starting concentration is 1 Mu g/mL. Please optimize the concentration based on your specific assay requirements.
Formulation	PBS with 0.01% Thimerosal, 50% Glycerol, pH 7.3.
Isotype	IgG
Storage	Store at -20°C for up to 1 year from the date of receipt, and avoid repeat freeze-thaw cycles.
Instruction	

TARGET INFORMATION

Gene ID	23189
Gene Symbol	KANK1
Uniprot ID	KANK1_HUMAN
Immunogen	
Immunogen Region	900-1000
Specificity	A synthetic peptide corresponding to a sequence within amino acids 900-1000 of human KANK1 (NP_055973.2).
Immunogen Sequence	GNYLGYTCKCGGLQSGSPLS SQT SQPEQEVGTSEGKPISS LDAFPTQEGT LSPVNLDDQ IAAGLYACTNNESTLKSIMK KKDGNKDSNGAKKNLQFVGI N



Immunofluorescence analysis of L929 cells using KANK1 Rabbit polyclonal antibody (STJ11101206) at dilution of 1:100. Blue: DAPI for nuclear staining.

This product is suitable for in-vitro studies under the RESEARCH USE ONLY [RUO] licence. This product must not be used as for diagnostic or other medical purposes.
St John's Laboratory Ltd, Knowledge Dock Business Centre, University Way, London, E16 2RD | Tel: 0208 223 3081