

Anti-CHRM1 antibody (6-460) (STJ11101182)

STJ11101182

GENERAL INFORMATION

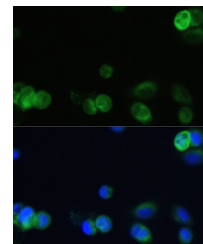
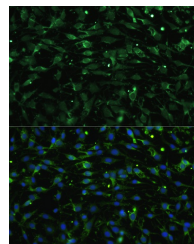
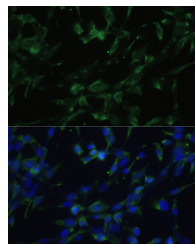
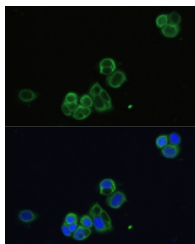
Product Type	Primary antibodies
Short Description	
Applications	WB/IF/CC/ELISA
Host/Source	Rabbit
Reactivity	Human/Mouse/Rat

PRODUCT PROPERTIES

Clonality	Polyclonal
Clone ID	
Concentration	Lot specific
Conjugation	Unconjugated
Purification	Affinity purification
Dilution Range	WB:1:1000-1:5000 IF/CC:1:50-1:200 ELISA:Recommended starting concentration is 1 µg/mL. Please optimize the concentration based on your specific assay requirements.
Formulation	PBS with 0.01% Thimerosal, 50% Glycerol, pH 7.3.
Isotype	IgG
Storage Instruction	Store at -20°C for up to 1 year from the date of receipt, and avoid repeat freeze-thaw cycles.

TARGET INFORMATION

Gene ID	1128
Gene Symbol	CHRM1
Uniprot ID	ACM1_HUMAN
Immunogen	
Immunogen Region	6-460
Specificity	A synthetic peptide corresponding to a sequence within amino acids 1-100 of human CHRM1 (NP_000729.2).
Immunogen Sequence	MNTSAPPVSPNITVLAPGK GPWQVAFIGITGLLSLATV TGNLLVLISFKVNTLKTIVN NYFLLSLACADLIIGTFSMN LYTTYLLMGHWALGTACDL



Immunofluorescence analysis of NIH-3T3 cells using CHRM1 Rabbit polyclonal antibody (STJ11101182) at dilution of 1:100. Secondary antibody: Cy3 Goat Anti-Rabbit IgG (H+L) at 1:500 dilution. Blue: DAPI for nuclear staining.

Immunofluorescence analysis of C6 cells using CHRM1 Rabbit polyclonal antibody (STJ11101182) at dilution of 1:100. Secondary antibody: Cy3 Goat Anti-Rabbit IgG (H+L) at 1:500 dilution. Blue: DAPI for nuclear staining.

Immunofluorescence analysis of OVCAR-3 cells using CHRM1 Rabbit polyclonal antibody (STJ11101182) at dilution of 1:100. Secondary antibody: Cy3 Goat Anti-Rabbit IgG (H+L) at 1:500 dilution. Blue: DAPI for nuclear staining.

This product is suitable for in-vitro studies under the RESEARCH USE ONLY [RUO] licence. This product must not be used as for diagnostic or other medical purposes.
St John's Laboratory Ltd, Knowledge Dock Business Centre, University Way, London, E16 2RD | Tel: 0208 223 3081