

Anti-PPP1R15A antibody (375-674) (STJ11101176)
STJ11101176

GENERAL INFORMATION

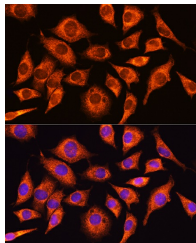
Product Type	Primary antibodies
Short Description	
Applications	WB/IF/ICC/ELISA
Host/Source	Rabbit
Reactivity	Human/Mouse/Rat

PRODUCT PROPERTIES

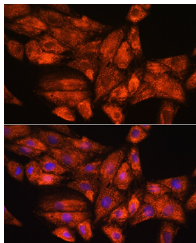
Clonality	Polyclonal
Clone ID	
Concentration	Lot specific
Conjugation	Unconjugated
Purification	Affinity purification
Dilution Range	WB:1:500-1:2000 IF/CC:1:50-1:200 ELISA:Recommended starting concentration is 1 µg/mL. Please optimize the concentration based on your specific assay requirements.
Formulation	PBS with 0.01% Thimerosal, 50% Glycerol, pH 7.3.
Isotype	IgG
Storage Instruction	Store at -20°C for up to 1 year from the date of receipt, and avoid repeat freeze-thaw cycles.

TARGET INFORMATION

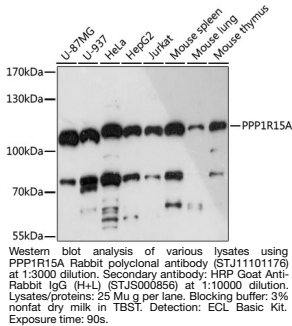
Gene ID	23645
Gene Symbol	PPP1R15A
Uniprot ID	PR15A_HUMAN
Immunogen Region	375-674
Specificity	Recombinant fusion protein containing a sequence corresponding to amino acids 375-674 of human PPP1R15A (NP_055145.3).
Immunogen Sequence	ASSSTPATGVFLKSWVYQPG EDTDEEEDESDTGSAEDER EAETSASTPPASAFLKAWVY RPGEDTEEEEDVDSEDKEDDSEAAALGEASDPHPSPD QRAHFRGWGYRPGKETEEEE AAEDWGEAEPFPRVAIYVP GEKPPPPWAPPRLPLRLQRR LKRPETPTHTDPDPETPLKAR KVRFSEKVTVHFLAVWAGPA QAARQGPWEQLARDRSRFR RITQAQEELSPCLTPAARA



Immunofluorescence analysis of L929 cells using PPP1R15A Rabbit polyclonal antibody (STJ11101176) at dilution of 1:100. Secondary antibody: Cy3 Goat Anti-Rabbit IgG (H+L) at 1:500 dilution. Blue: DAPI for nuclear staining.



Immunofluorescence analysis of H9C2 cells using PPP1R15A Rabbit polyclonal antibody (STJ11101176) at dilution of 1:100. Secondary antibody: Cy3 Goat Anti-Rabbit IgG (H+L) at 1:500 dilution. Blue: DAPI for nuclear staining.



This product is suitable for in-vitro studies under the RESEARCH USE ONLY [RUO] licence. This product must not be used as for diagnostic or other medical purposes.
St John's Laboratory Ltd, Knowledge Dock Business Centre, University Way, London, E16 2RD | Tel: 0208 223 3081