

Anti-Phospho-MAPT-Ser416 antibody (STJ11101135)

STJ11101135

GENERAL INFORMATION

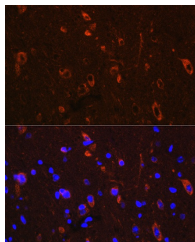
Product Type	Primary antibodies
Short Description	
Applications	WB/IHC-P/IF/ICC/ELISA
Host/Source	Rabbit
Reactivity	Human/Mouse/Rat

PRODUCT PROPERTIES

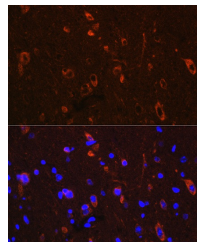
Clonality	Polyclonal
Clone ID	
Concentration	Lot specific
Conjugation	Unconjugated
Purification	Affinity purification
Dilution Range	WB:1:500-1:2000 IHC-P:1:50-1:200 IF/ICC:1:50-1:200 ELISA:Recommended starting concentration is 1 Mu g/mL. Please optimize the concentration based on your specific assay requirements.
Formulation	PBS with 0.01% Thimerosal, 50% Glycerol, pH 7.3.
Isotype	IgG
Storage Instruction	Store at -20°C for up to 1 year from the date of receipt, and avoid repeat freeze-thaw cycles.

TARGET INFORMATION

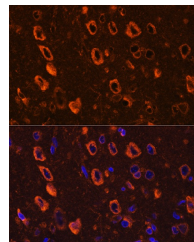
Gene ID	4137
Gene Symbol	MAPT
Uniprot ID	TAU_HUMAN
Immunogen	TGSID
Immunogen Region	
Specificity	A synthetic phosphorylated peptide around S416 of human Tau (NP_005901.2).
Immunogen Sequence	TGSID



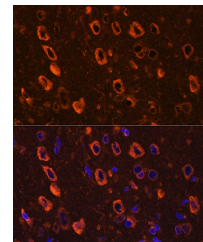
Western blot analysis of extracts of NIH/3T3 cells, using Phospho-Tau-Ser416 polyclonal antibody (STJ11101135) at 1:1000 dilution or Tau antibody (A0002). NIH/3T3 cells were treated by CIP (20uL/400uL) at 37 °C for 1 hour. Secondary antibody: HRP Goat Anti-rabbit IgG (H+L) at 1:10000 dilution. Lysates/proteins: 25ug per lane. Blocking buffer: 3% BSA. Detection: ECL Basic Kit. Exposure time: 60s.



Immunofluorescence analysis of paraffin-embedded Mouse brain using Phospho-Tau-Ser416 Rabbit polyclonal antibody (STJ11101135) at dilution of 1:100. Secondary antibody: Cy3 Goat Anti-Rabbit IgG (H+L) at 1:500 dilution. Blue: DAPI for nuclear staining.



Immunohistochemistry of paraffin-embedded Human brain using Phospho-Tau-Ser416 rabbit polyclonal antibody (STJ11101135) at dilution of 1:100 (40x lens).



Immunofluorescence analysis of paraffin-embedded Rat brain using Phospho-Tau-Ser416 Rabbit polyclonal antibody (STJ11101135) at dilution of 1:100. Secondary antibody: Cy3 Goat Anti-Rabbit IgG (H+L) at 1:500 dilution. Blue: DAPI for nuclear staining.

This product is suitable for in-vitro studies under the RESEARCH USE ONLY [RUO] licence. This product must not be used as for diagnostic or other medical purposes.
St John's Laboratory Ltd, Knowledge Dock Business Centre, University Way, London, E16 2RD | Tel: 0208 223 3081