

Anti-Phospho-KDR-Y1175 antibody (STJ11101129)

STJ11101129

GENERAL INFORMATION

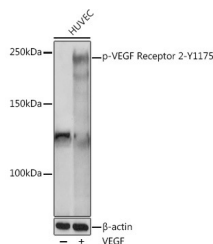
Product Type	Primary antibodies
Short Description	
Applications	WB/ELISA
Host/Source	Rabbit
Reactivity	Human/Mouse/Rat

PRODUCT PROPERTIES

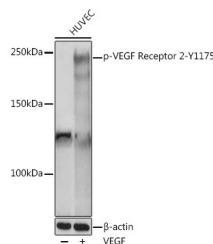
Clonality	Polyclonal
Clone ID	
Concentration	Lot specific
Conjugation	Unconjugated
Purification	Affinity purification
Dilution Range	WB:1:500-1:2000 ELISA:Recommended starting concentration is 1 Mu g/mL. Please optimize the concentration based on your specific assay requirements.
Formulation	PBS with 0.01% Thimerosal, 50% Glycerol, pH 7.3.
Isotype	IgG
Storage Instruction	Store at -20°C for up to 1 year from the date of receipt, and avoid repeat freeze-thaw cycles.

TARGET INFORMATION

Gene ID	3791
Gene Symbol	KDR
Uniprot ID	VGFR2_HUMAN
Immunogen	KDYIV
Immunogen Region	
Specificity	A synthetic phosphorylated peptide around Y1175 of human VEGF Receptor 2 (NP_002244.1).
Immunogen Sequence	KDYIV



Western blot analysis of extracts of various cell lines, using Phospho-VEGF Receptor 2-Y1175 polyclonal antibody (STJ11101129) at 1:1000 dilution. HUVEC cells were treated by VEGF (100 ng/mL) at 37 °C for 5 minutes after serum-starvation overnight. Secondary antibody: HRP Goat Anti-rabbit IgG (H+L) at 1:10000 dilution. Lysates/proteins: 25ug per lane. Blocking buffer: 3% non-fat dry milk in TBST. Detection: ECL Basic Kit. Exposure time: 10s.



Western blot analysis of various lysates using Phospho-VEGF Receptor 2-Y1175 polyclonal antibody (STJ11101129) at 1:1000 dilution. HUVEC cells were treated by VEGF (100 ng/mL) at 37 °C for 5 minutes after serum-starvation overnight. Secondary antibody: HRP Goat Anti-Rabbit IgG (H+L) (STJS000856) at 1:10000 dilution. Lysates/proteins: 25 Mu g per lane. Blocking buffer: 3% nonfat dry milk in TBST. Detection: ECL Basic Kit. Exposure time: 10s.

This product is suitable for in-vitro studies under the RESEARCH USE ONLY [RUO] licence. This product must not be used as for diagnostic or other medical purposes.
St John's Laboratory Ltd, Knowledge Dock Business Centre, University Way, London, E16 2RD | Tel: 0208 223 3081