

**Anti-Phospho-IGF1R/INSR-Y1189/Y1190 & Y1165/Y1166 antibody (STJ11101123)**  
STJ11101123

**GENERAL INFORMATION**

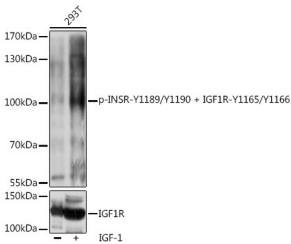
<b>Product Type</b>	Primary antibodies
<b>Short Description</b>	
<b>Applications</b>	WB/ELISA
<b>Host/Source</b>	Rabbit
<b>Reactivity</b>	Human/Mouse/Rat

**PRODUCT PROPERTIES**

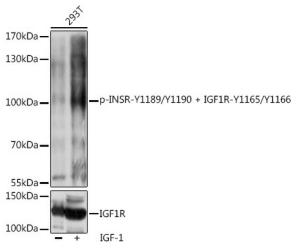
<b>Clonality</b>	Polyclonal
<b>Clone ID</b>	
<b>Concentration</b>	Lot specific
<b>Conjugation</b>	Unconjugated
<b>Purification</b>	Affinity purification
<b>Dilution Range</b>	WB:1:500-1:2000 ELISA:Recommended starting concentration is 1 Mu g/mL. Please optimize the concentration based on your specific assay requirements.
<b>Formulation</b>	PBS with 0.01% Thimerosal, 50% Glycerol, pH 7.3.
<b>Isotype</b>	IgG
<b>Storage Instruction</b>	Store at -20°C for up to 1 year from the date of receipt, and avoid repeat freeze-thaw cycles.

**TARGET INFORMATION**

<b>Gene ID</b>	<a href="#">3643</a> <a href="#">3480</a>
<b>Gene Symbol</b>	<a href="#">INSR</a> <a href="#">IGF1R</a>
<b>Uniprot ID</b>	<a href="#">INSR_HUMAN</a> <a href="#">IGF1R_HUMAN</a>
<b>Immunogen</b>	YETDYY
<b>Immunogen Region</b>	
<b>Specificity</b>	A synthetic phosphorylated peptide around Y1165 & Y1166 of human IGF1R/INSR (NP_000199.2).
<b>Immunogen Sequence</b>	YETDYY



Western blot analysis of extracts of 293T cells, using Phospho-INSR-Y1189/Y1190 + IGF1R-Y1165/Y1166 antibody (STJ11101123) at 1:1000 dilution or IGF1R antibody (A0243). 293T cells were treated by IGF-1 (50 ng/mL) at 37 °C for 5 minutes after serum-starvation overnight. Secondary antibody: HRP Goat Anti-rabbit IgG (H+L) at 1:10000 dilution. Lysates/proteins: 25µg per lane. Blocking buffer: 3% BSA. Detection: ECL Basic Kit. Exposure time: 1s.



Western blot analysis of lysates from 293T cells, using Phospho-INSR-Y1189/Y1190 + IGF1R-Y1165/Y1166 Rabbit polyclonal antibody (STJ11101123) at 1:1000 dilution or IGF1R antibody (A0243). 293T cells were treated by IGF-1 (50 ng/mL) at 37 °C for 5 minutes after serum-starvation overnight. Secondary antibody: HRP Goat Anti-Rabbit IgG (H+L) (STJS000856) at 1:10000 dilution. Lysates/proteins: 25 Mu g per lane. Blocking buffer: 3% BSA. Detection: ECL Basic Kit. Exposure time: 1s.

This product is suitable for in-vitro studies under the RESEARCH USE ONLY [RUO] licence. This product must not be used as for diagnostic or other medical purposes.  
St John's Laboratory Ltd, Knowledge Dock Business Centre, University Way, London, E16 2RD | Tel: 0208 223 3081