

Anti-Phospho-CTNNB1-S29/33/37/T41 antibody (STJ11101114)

STJ11101114

GENERAL INFORMATION

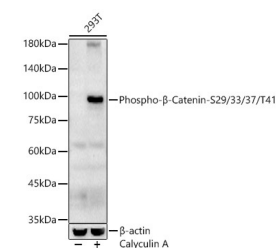
Product Type	Primary antibodies
Short Description	
Applications	WB/ELISA
Host/Source	Rabbit
Reactivity	Human/Mouse/Rat

PRODUCT PROPERTIES

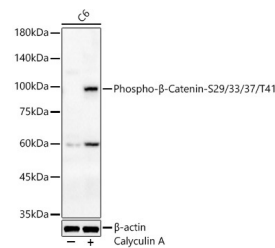
Clonality	Polyclonal
Clone ID	
Concentration	Lot specific
Conjugation	Unconjugated
Purification	Affinity purification
Dilution Range	WB:1:100-1:500 ELISA:Recommended starting concentration is 1 µg/mL. Please optimize the concentration based on your specific assay requirements.
Formulation	PBS with 0.05% Proclin300, 50% Glycerol, pH 7.3.
Isotype	IgG
Storage Instruction	Store at -20°C for up to 1 year from the date of receipt, and avoid repeat freeze-thaw cycles.

TARGET INFORMATION

Gene ID	1499
Gene Symbol	CTNNB1
Uniprot ID	CTNNB1_HUMAN
Immunogen	SYLDSGIHSGATT
Immunogen Region	
Specificity	A synthetic phosphorylated peptide around S29 & S33 & S37 & T41 of human CTNNB1 (NP_001895.1).
Immunogen Sequence	SYLDSGIHSGATT



Western blot analysis of various lysates, using Phospho-Beta-Catenin-S29/33/37/T41 antibody (STJ11101114) at 1:400 dilution. 293T cells were treated by Calyculin A (100 nM) at 37 °C for 30 minutes after serum-starvation overnight. Secondary antibody: HRP Goat Anti-rabbit IgG (H+L) (STJSD00856) at 1:10000 dilution. Lysates/proteins: 25 µg per lane. Blocking buffer: 3% non-fat dry milk in TBST. Detection: ECL Basic Kit. Exposure time: 90s.



Western blot analysis of C6, using Phospho-Beta-Catenin-S29/33/37/T41 antibody (STJ11101114) at 1:400 dilution. C6 cells were treated by Calyculin A (100 nM) at 37 °C for 30 minutes after serum-starvation overnight. Secondary antibody: HRP Goat Anti-rabbit IgG (H+L) (STJSD00856) at 1:10000 dilution. Lysates/proteins: 25 µg per lane. Blocking buffer: 3% non-fat dry milk in TBST. Detection: ECL Basic Kit. Exposure time: 90s.

This product is suitable for in-vitro studies under the RESEARCH USE ONLY [RUO] licence. This product must not be used as for diagnostic or other medical purposes.
St John's Laboratory Ltd, Knowledge Dock Business Centre, University Way, London, E16 2RD | Tel: 0208 223 3081