

Anti-Phospho-FADD-S194 antibody (STJ11101092)

STJ11101092

GENERAL INFORMATION

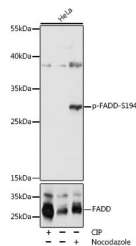
Product Type	Primary antibodies
Short Description	
Applications	WB/ELISA
Host/Source	Rabbit
Reactivity	Human

PRODUCT PROPERTIES

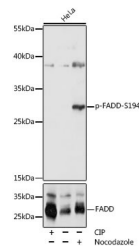
Clonality	Polyclonal
Clone ID	
Concentration	Lot specific
Conjugation	Unconjugated
Purification	Affinity purification
Dilution Range	WB:1:500-1:2000 ELISA:Recommended starting concentration is 1 μ g/mL. Please optimize the concentration based on your specific assay requirements.
Formulation	PBS with 0.01% Thimerosal, 50% Glycerol, pH 7.3.
Isotype	IgG
Storage Instruction	Store at -20°C for up to 1 year from the date of receipt, and avoid repeat freeze-thaw cycles.

TARGET INFORMATION

Gene ID	8772
Gene Symbol	FADD
Uniprot ID	FADD_HUMAN
Immunogen	AMSPM
Immunogen Region	
Specificity	A synthetic phosphorylated peptide around S194 of human FADD (NP_003815.1).
Immunogen Sequence	AMSPM



Western blot analysis of extracts of HeLa cells, using Phospho-FADD-S194 polyclonal antibody (STJ11101092) at 1:1000 dilution or FADD antibody (AS819). HeLa cells were treated by CIP (20 μ L/400uL) at 37 $^{\circ}$ C for 1 hour. HeLa cells were treated by nocodazole (50 ng/mL) at 37 $^{\circ}$ C for 20 hours. Secondary antibody: HRP Goat Anti-rabbit IgG (H+L) at 1:10000 dilution. Lysates/proteins: 25 μ g per lane. Blocking buffer: 3% BSA. Detection: ECL Basic Kit. Exposure time: 60s.



Western blot analysis of lysates from HeLa cells, using Phospho-FADD-S194 Rabbit polyclonal antibody (AS819). HeLa cells were treated by CIP (20 μ L/400uL) at 37 $^{\circ}$ C for 1 hour. HeLa cells were treated by nocodazole (50 ng/mL) at 37 $^{\circ}$ C for 20 hours. Secondary antibody: HRP Goat Anti-Rabbit IgG (H+L) (STJS000856) at 1:10000 dilution. Lysates/proteins: 25 μ g per lane. Blocking buffer: 3% BSA. Detection: ECL Basic Kit. Exposure time: 60s.

This product is suitable for in-vitro studies under the RESEARCH USE ONLY [RUO] licence. This product must not be used as for diagnostic or other medical purposes.
St John's Laboratory Ltd, Knowledge Dock Business Centre, University Way, London, E16 2RD | Tel: 0208 223 3081