

Anti-Phospho-MYL9-T18/S19 antibody (STJ11101086)

STJ11101086

GENERAL INFORMATION

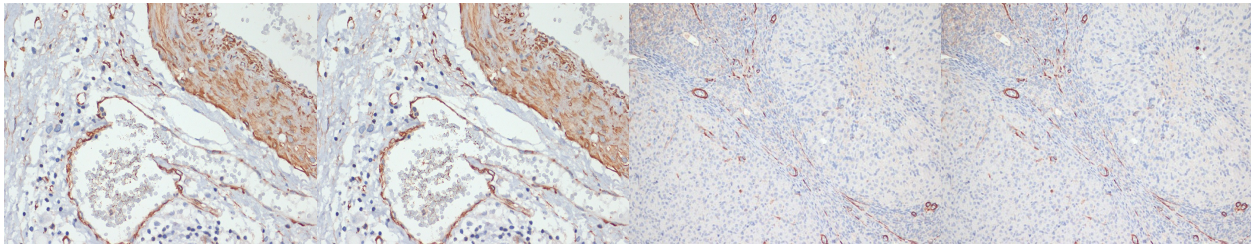
Product Type	Primary antibodies
Short Description	
Applications	WB/IHC-P/ELISA
Host/Source	Rabbit
Reactivity	Human/Mouse/Rat

PRODUCT PROPERTIES

Clonality	Polyclonal
Clone ID	
Concentration	Lot specific
Conjugation	Unconjugated
Purification	Affinity purification
Dilution Range	WB:1:1000-1:5000 IHC-P:1:50-1:200 ELISA:Recommended starting concentration is 1 μ g/mL. Please optimize the concentration based on your specific assay requirements.
Formulation	PBS with 0.05% Proclin300, 50% Glycerol, pH 7.3.
Isotype	IgG
Storage Instruction	Store at -20°C for up to 1 year from the date of receipt, and avoid repeat freeze-thaw cycles.

TARGET INFORMATION

Gene ID	10398
Gene Symbol	MYL9
Uniprot ID	MYL9_HUMAN
Immunogen	RATSNV
Immunogen Region	
Specificity	A synthetic phosphorylated peptide around T18 & S19 of human MYL9 (NP_006088.2).
Immunogen Sequence	RATSNV



Western blot analysis of extracts of various cell lines, using Phospho-MYL9-T18/S19 antibody (STJ11101086) at 1:1000 dilution. 293T cells and C2C12 and C6 cells were treated by ATP (5 mM) at 30 A°C for 1 hour. Secondary antibody: HRP Goat Anti-rabbit IgG (H+L) at 1:10000 dilution. Lysates/proteins: 25 μ g per lane. Blocking buffer: 3% BSA. Detection: ECL Basic Kit. Exposure time: 90s.

Immunohistochemistry analysis of MYL9 in paraffin-embedded Human gastric cancer using Phospho-MYL9-T18/S19 antibody (STJ11101086) at dilution of 1:100 (40x lens). Perform microwave antigen retrieval with 10 mM Tris/EDTA buffer pH 9.0 before commencing with immunohistochemistry staining protocol.

Immunohistochemistry of paraffin-embedded Rat ovary using Phospho-MYL9-T18/S19 antibody (STJ11101086) at dilution of 1:100 (20x lens).

Immunohistochemistry analysis of MYL9 in paraffin-embedded Rat ovary using Phospho-MYL9-T18/S19 antibody (STJ11101086) at dilution of 1:100 (20x lens). Perform microwave antigen retrieval with 10 mM Tris/EDTA buffer pH 9.0 before commencing with immunohistochemistry staining protocol.

This product is suitable for in-vitro studies under the RESEARCH USE ONLY [RUO] licence. This product must not be used as for diagnostic or other medical purposes.
St John's Laboratory Ltd, Knowledge Dock Business Centre, University Way, London, E16 2RD | Tel: 0208 223 3081