

Anti-Phospho-MLKL-T357/S358/S360 antibody (STJ11101081)

STJ11101081

GENERAL INFORMATION

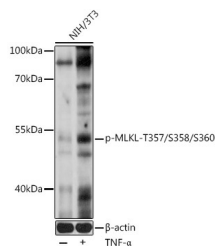
Product Type	Primary antibodies
Short Description	
Applications	WB/ELISA
Host/Source	Rabbit
Reactivity	Human/Mouse/Rat

PRODUCT PROPERTIES

Clonality	Polyclonal
Clone ID	
Concentration	Lot specific
Conjugation	Unconjugated
Purification	Affinity purification
Dilution Range	WB:1:500-1:2000 ELISA:Recommended starting concentration is 1 Mu g/mL. Please optimize the concentration based on your specific assay requirements.
Formulation	PBS with 0.05% Proclin300, 50% Glycerol, pH 7.3.
Isotype	IgG
Storage Instruction	Store in a freezer at -20°C and avoid freeze-thaw cycles.

TARGET INFORMATION

Gene ID	197259
Gene Symbol	MLKL
Uniprot ID	MLKL_HUMAN
Immunogen	TQTSM SLG
Immunogen Region	
Specificity	A synthetic phosphorylated peptide around T357 & S358 & S360 of human MLKL (NP_689862.1).
Immunogen Sequence	TQTSM SLG



Western blot analysis of lysates from NIH/3T3 cells, using Phospho-MLKL-T357/S358/S360 pAb (STJ11101081) at 1:1000 dilution. NIH/3T3 cells were treated by TNF-Alpha (20 ng/mL) at 37 °C for 30 minutes. Secondary antibody: HRP-conjugated Goat anti-Rabbit IgG (H+L) (STJS000856) at 1:10000 dilution. Lysates/proteins: 25 Mu g per lane. Blocking buffer: 3% nonfat dry milk in TBST. Detection: ECL Basic Kit. Exposure time: 60s.

This product is suitable for in-vitro studies under the RESEARCH USE ONLY [RUO] licence. This product must not be used as for diagnostic or other medical purposes.
St John's Laboratory Ltd, Knowledge Dock Business Centre, University Way, London, E16 2RD | Tel: 0208 223 3081