

Anti-Phospho-SMO-S616 antibody (STJ11101072)

STJ11101072

GENERAL INFORMATION

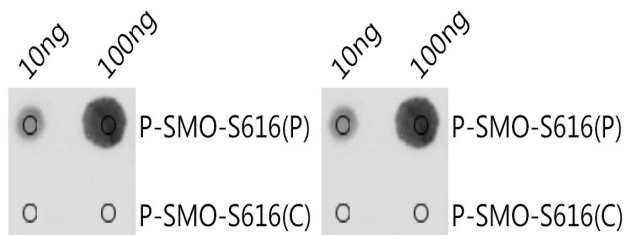
Product Type	Primary antibodies
Short Description	
Applications	WB/DB/ELISA
Host/Source	Rabbit
Reactivity	Human

PRODUCT PROPERTIES

Clonality	Polyclonal
Clone ID	
Concentration	Lot specific
Conjugation	Unconjugated
Purification	Affinity purification
Dilution Range	WB:1:500-1:1000 DB:1:500-1:1000 ELISA:Recommended starting concentration is 1 µg/mL. Please optimize the concentration based on your specific assay requirements.
Formulation	PBS with 0.01% Thimerosal, 50% Glycerol, pH 7.3.
Isotype	IgG
Storage Instruction	Store at -20°C for up to 1 year from the date of receipt, and avoid repeat freeze-thaw cycles.

TARGET INFORMATION

Gene ID	6608
Gene Symbol	SMO
Uniprot ID	SMO_HUMAN
Immunogen	VSSAW
Immunogen Region	
Specificity	A synthetic phosphorylated peptide around S616 of human SMO (NP_005622.1).
Immunogen Sequence	VSSAW



This product is suitable for in-vitro studies under the RESEARCH USE ONLY [RUO] licence. This product must not be used as for diagnostic or other medical purposes.
St John's Laboratory Ltd, Knowledge Dock Business Centre, University Way, London, E16 2RD | Tel: 0208 223 3081