

Anti-Phospho-PTEN-S380 antibody (STJ11101064)

STJ11101064

GENERAL INFORMATION

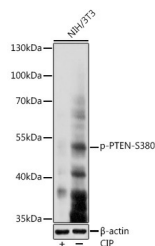
| | |
|--------------------------|--------------------|
| Product Type | Primary antibodies |
| Short Description | |
| Applications | WB/ELISA |
| Host/Source | Rabbit |
| Reactivity | Human/Mouse/Rat |

PRODUCT PROPERTIES

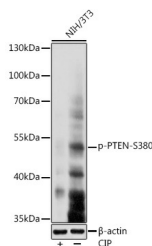
| | |
|----------------------------|--|
| Clonality | Polyclonal |
| Clone ID | |
| Concentration | Lot specific |
| Conjugation | Unconjugated |
| Purification | Affinity purification |
| Dilution Range | WB:1:500-1:1000 ELISA:Recommended starting concentration is 1 µg/mL. Please optimize the concentration based on your specific assay requirements. |
| Formulation | PBS with 0.05% Proclin300, 50% Glycerol, pH 7.3. |
| Isotype | IgG |
| Storage Instruction | Store at -20°C for up to 1 year from the date of receipt, and avoid repeat freeze-thaw cycles. |

TARGET INFORMATION

| | |
|---------------------------|---|
| Gene ID | 5728 |
| Gene Symbol | PTEN |
| Uniprot ID | PTEN_HUMAN |
| Immunogen | RYSDT |
| Immunogen Region | |
| Specificity | A synthetic phosphorylated peptide around S380 of human PTEN (NP_000305.3). |
| Immunogen Sequence | RYSDT |



Western blot analysis of extracts of NIH/3T3 cells, using Phospho-PTEN-S380 antibody (STJ11101064) at 1:1000 dilution. NIH/3T3 cells were treated by CIP (20 µL/400 µL) at 37 °C for 1 hour. Secondary antibody: HRP-Goat Anti-rabbit IgG (H+L) at 1:10000 dilution. Lysates/proteins: 25 µg per lane. Blocking buffer: 3% non-fat dry milk in TBST. Detection: ECL Basic Kit. Exposure time: 1s.



Western blot analysis of extracts of NIH/3T3 cells, using Phospho-PTEN-S380 antibody (STJ11101064) at 1:1000 dilution. NIH/3T3 cells were treated by CIP (20 µL/400 µL) at 37 °C for 1 hour. Secondary antibody: HRP-Goat Anti-Rabbit IgG (H+L) (STJ5000856) at 1:10000 dilution. Lysates/proteins: 25 µg per lane. Blocking buffer: 3% nonfat dry milk in TBST. Detection: ECL Basic Kit. Exposure time: 1s.

This product is suitable for in-vitro studies under the RESEARCH USE ONLY [RUO] licence. This product must not be used as for diagnostic or other medical purposes.
St John's Laboratory Ltd, Knowledge Dock Business Centre, University Way, London, E16 2RD | Tel: 0208 223 3081