

Anti-Phospho-ATF2-T69/71 antibody (STJ11101048)
STJ11101048

GENERAL INFORMATION

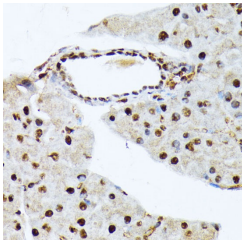
Product Type	Primary antibodies
Short Description	
Applications	WB/IHC-P/ELISA
Host/Source	Rabbit
Reactivity	Human/Mouse/Rat

PRODUCT PROPERTIES

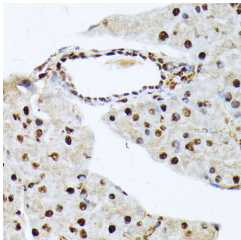
Clonality	Polyclonal
Clone ID	
Concentration	Lot specific
Conjugation	Unconjugated
Purification	Affinity purification
Dilution Range	WB:1:500-1:2000 IHC-P:1:50-1:200 ELISA:Recommended starting concentration is 1 µg/mL. Please optimize the concentration based on your specific assay requirements.
Formulation	PBS with 0.01% Thimerosal, 50% Glycerol, pH 7.3.
Isotype	IgG
Storage Instruction	Store at -20°C for up to 1 year from the date of receipt, and avoid repeat freeze-thaw cycles.

TARGET INFORMATION

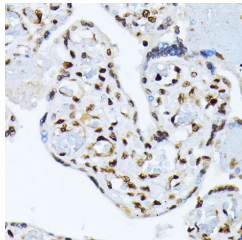
Gene ID	1386
Gene Symbol	ATF2
Uniprot ID	ATF2_HUMAN
Immunogen	QTPTP
Immunogen Region	
Specificity	A synthetic phosphorylated peptide around T69 & T71 of human ATF2 (NP_001871.2?).
Immunogen Sequence	QTPTP



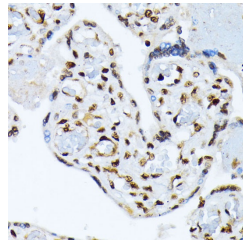
Western blot analysis of extracts of NIH/3T3 cells, using phospho-ATF2-T69/71 antibody (STJ11101048) at 1:1000 dilution or ATF2 antibody (A2155). 293T cells were treated by UV at room temperature for 15-30 minutes. Secondary antibody: HRP Goat Anti-rabbit IgG (H+L) at 1:10000 dilution. Lysates/proteins: 25µg per lane. Blocking buffer: 3% BSA. Detection: ECL Basic Kit. Exposure time: 180s.



Immunohistochemistry analysis of Phospho-ATF2-T69/71 in paraffin-embedded mouse pancreas using Phospho-ATF2-T69/71 Rabbit polyclonal antibody (STJ11101048) at dilution of 1:100 (40x lens). Perform microwave antigen retrieval with 10 mM Tris/EDTA buffer pH 9.0 before commencing with immunohistochemistry staining protocol.



Immunohistochemistry of paraffin-embedded rat kidney using Phospho-ATF2-T69/71 antibody (STJ11101048) at dilution of 1:100 (40x lens).



Immunohistochemistry analysis of Phospho-ATF2-T69/71 in paraffin-embedded human placenta using Phospho-ATF2-T69/71 Rabbit polyclonal antibody (STJ11101048) at dilution of 1:100 (40x lens). Perform microwave antigen retrieval with 10 mM Tris/EDTA buffer pH 9.0 before commencing with immunohistochemistry staining protocol.