

Anti-Phospho-Histone H3-T6 antibody (STJ11101035)
STJ11101035

GENERAL INFORMATION

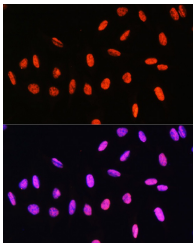
Product Type	Primary antibodies
Short Description	
Applications	WB/IHC-P/IF/ICC/ELISA
Host/Source	Rabbit
Reactivity	Human/Mouse/Rat/Other

PRODUCT PROPERTIES

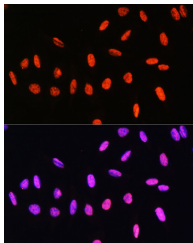
Clonality	Polyclonal
Clone ID	
Concentration	Lot specific
Conjugation	Unconjugated
Purification	Affinity purification
Dilution Range	WB:1:500-1:1000 IHC-P:1:50-1:200 IF/ICC:1:50-1:200 ELISA:Recommended starting concentration is 1 Mu g/mL. Please optimize the concentration based on your specific assay requirements.
Formulation	PBS with 0.05% Proclin300, 50% Glycerol, pH 7.3.
Isotype	IgG
Storage Instruction	Store at -20°C for up to 1 year from the date of receipt, and avoid repeat freeze-thaw cycles.

TARGET INFORMATION

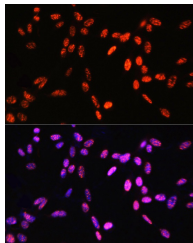
Gene ID	8290 8350/8351/8352/8353/8354/8355/8356/8357/8358/8968
Gene Symbol	H3-4 H3C1.H3C2.H3C3.H3C4.H3C6.
Uniprot ID	H31T_HUMAN H31_HUMAN
Immunogen	KQTAR
Immunogen Region	
Specificity	A synthetic phosphorylated peptide around T6 of human (NP_003520.1).
Immunogen Sequence	KQTAR



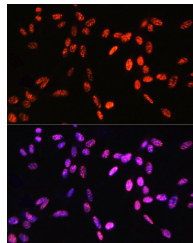
Western blot analysis of extracts of various cell lines, using Phospho-Histone H3-T6 antibody (STJ11101035) at 1:1000 dilution. HeLa cells and NIH/3T3 cells were treated by CIP (20uL/400uL) at 37 A°C for 1 hour. HeLa cells were treated by nocodazole (50 ng/ml) at 37 A°C for 20 hours. Secondary antibody: HRP Goat Anti-rabbit IgG (H+L) at 1:10000 dilution. Lysates/proteins: 25ug per lane. Blocking buffer: 3% non-fat dry milk in TBST. Detection: ECL Enhanced Kit. Exposure time: 1s.



Immunofluorescence analysis of U-2 OS cells using Phospho-Histone H3-T6 Rabbit polyclonal antibody (STJ11101035) at dilution of 100 (40x lens). Secondary antibody: Cy3 Goat Anti-Rabbit IgG (H+L) at 1:500 dilution. Blue: DAPI for nuclear staining.



Immunohistochemistry of paraffin-embedded human colon using Phospho-Histone H3-T6 antibody (STJ11101035) at dilution of 1:100 (40x lens).



Immunofluorescence analysis of NIH-3T3 cells using Phospho-Histone H3-T6 Rabbit polyclonal antibody (STJ11101035) at dilution of 100 (40x lens). Secondary antibody: Cy3 Goat Anti-Rabbit IgG (H+L) at 1:500 dilution. Blue: DAPI for nuclear staining.