

Anti-Phospho-FoxO1/FoxO3a/FoxO4-T24/T32/T28 antibody (STJ11101029)
STJ11101029

GENERAL INFORMATION

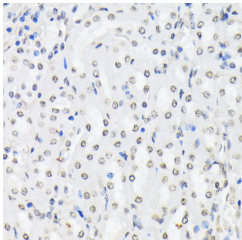
Product Type	Primary antibodies
Short Description	
Applications	WB/IHC-P/ELISA
Host/Source	Rabbit
Reactivity	Human/Mouse/Rat

PRODUCT PROPERTIES

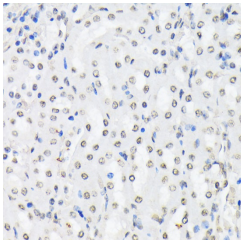
Clonality	Polyclonal
Clone ID	
Concentration	Lot specific
Conjugation	Unconjugated
Purification	Affinity purification
Dilution Range	WB:1:100-1:500 IHC-P:1:50-1:200 ELISA:Recommended starting concentration is 1 µg/mL. Please optimize the concentration based on your specific assay requirements.
Formulation	PBS with 0.05% Proclin300, 50% Glycerol, pH 7.3.
Isotype	IgG
Storage Instruction	Store at -20°C for up to 1 year from the date of receipt, and avoid repeat freeze-thaw cycles.

TARGET INFORMATION

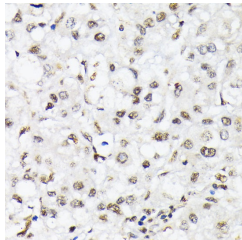
Gene ID	2309 2308
Gene Symbol	FOXO3 FOXO1
Uniprot ID	FOXO3_HUMAN FOXO1_HUMAN
Immunogen	SCTWP
Immunogen Region	
Specificity	A synthetic phosphorylated peptide around T24 of human FOXO1/FOXO3A/FOXO4FOXO1 (NP_002006.2).
Immunogen Sequence	SCTWP



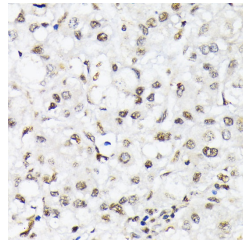
Western blot analysis of extracts of various cell lines, using Phospho-FOXO1-T24/FOXO3A-T32/FOXO4-T28 antibody (STJ11101029) at 1:500 dilution. Jurkat cells were treated by Calyculin A (100 nM) at 37 °C for 30 minutes. Secondary antibody: HRP Goat Anti-rabbit IgG (H+L) at 1:10000 dilution. Lysates/proteins: 25µg per lane. Blocking buffer: 3% non-fat dry milk in TBST. Detection: ECL Basic Kit. Exposure time: 30s.



Immunohistochemistry analysis of Phospho-FOXO1-T24/FOXO3A-T32/FOXO4-T28 in paraffin-embedded mouse kidney using Phospho-FOXO1-T24/FOXO3A-T32/FOXO4-T28 Rabbit polyclonal antibody (STJ11101029) at dilution of 1:200 (40x lens). Perform microwave antigen retrieval with 10 mM Tris/EDTA buffer pH 9.0 before commencing with immunohistochemistry staining protocol.



Immunohistochemistry of paraffin-embedded rat liver using Phospho-FOXO1-T24/FOXO3A-T32/FOXO4-T28 antibody (STJ11101029) at dilution of 1:200 (40x lens).



Immunohistochemistry analysis of Phospho-FOXO1-T24/FOXO3A-T32/FOXO4-T28 in paraffin-embedded human liver cancer using Phospho-FOXO1-T24/FOXO3A-T32/FOXO4-T28 Rabbit polyclonal antibody (STJ11101029) at dilution of 1:200 (40x lens). Perform microwave antigen retrieval with 10 mM Tris/EDTA buffer pH 9.0 before commencing with immunohistochemistry staining protocol.

This product is suitable for in-vitro studies under the RESEARCH USE ONLY [RUO] licence. This product must not be used as for diagnostic or other medical purposes.
St John's Laboratory Ltd, Knowledge Dock Business Centre, University Way, London, E16 2RD | Tel: 0208 223 3081