

Anti-Phospho-LDHA-Y10 antibody (STJ11101026)

STJ11101026

GENERAL INFORMATION

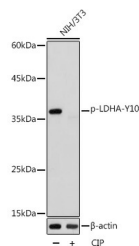
Product Type	Primary antibodies
Short Description	
Applications	WB/ELISA
Host/Source	Rabbit
Reactivity	Human/Mouse

PRODUCT PROPERTIES

Clonality	Polyclonal
Clone ID	
Concentration	Lot specific
Conjugation	Unconjugated
Purification	Affinity purification
Dilution Range	WB:1:500-1:1000 ELISA:Recommended starting concentration is 1 µg/mL. Please optimize the concentration based on your specific assay requirements.
Formulation	PBS with 0.01% Thimerosal, 50% Glycerol, pH 7.3.
Isotype	IgG
Storage Instruction	Store at -20°C for up to 1 year from the date of receipt, and avoid repeat freeze-thaw cycles.

TARGET INFORMATION

Gene ID	3939
Gene Symbol	LDHA
Uniprot ID	LDHA_HUMAN
Immunogen	LIYNL
Immunogen Region	
Specificity	A synthetic phosphorylated peptide around Y10 of human LDHA (NP_001128711.1).
Immunogen Sequence	LIYNL



Western blot analysis of extracts of NIH/3T3 cells, using Phospho-LDHA-Y10 antibody (STJ11101026) at 1:1000 dilution. NIH/3T3 cells were treated by CIP (20µL/400µl) at 37 °C for 1 hour. Secondary antibody: HRP-Goat Anti-rabbit IgG (H+L) at 1:10000 dilution. Lysates/proteins: 25µg per lane. Blocking buffer: 3% nonfat dry milk in TBST. Detection: ECL Basic Kit. Exposure time: 10s.

This product is suitable for in-vitro studies under the RESEARCH USE ONLY [RUO] licence. This product must not be used as for diagnostic or other medical purposes.
St John's Laboratory Ltd, Knowledge Dock Business Centre, University Way, London, E16 2RD | Tel: 0208 223 3081