

# Anti-Phospho-STAT5A/STAT5B-Y694 antibody (STJ11101025)

STJ11101025

## GENERAL INFORMATION

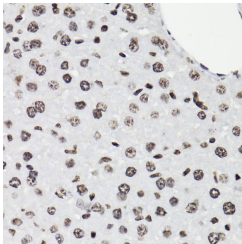
<b>Product Type</b>	Primary antibodies
<b>Short Description</b>	
<b>Applications</b>	WB/IHC-P/ELISA
<b>Host/Source</b>	Rabbit
<b>Reactivity</b>	Human/Mouse/Rat

## PRODUCT PROPERTIES

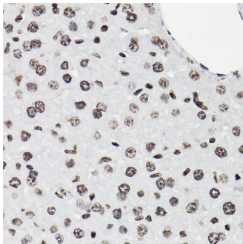
<b>Clonality</b>	Polyclonal
<b>Clone ID</b>	
<b>Concentration</b>	Lot specific
<b>Conjugation</b>	Unconjugated
<b>Purification</b>	Affinity purification
<b>Dilution Range</b>	WB:1:100-1:500 IHC-P:1:100-1:200 ELISA:Recommended starting concentration is 1 µg/mL. Please optimize the concentration based on your specific assay requirements.
<b>Formulation</b>	PBS with 0.05% Proclin300, 50% Glycerol, pH 7.3.
<b>Isotype</b>	IgG
<b>Storage Instruction</b>	Store at -20°C for up to 1 year from the date of receipt, and avoid repeat freeze-thaw cycles.

## TARGET INFORMATION

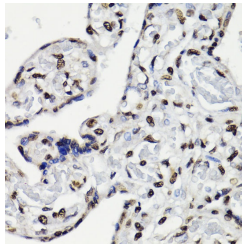
<b>Gene ID</b>	<a href="#">6776</a> <a href="#">6777</a>
<b>Gene Symbol</b>	<a href="#">STAT5A</a> <a href="#">STAT5B</a>
<b>Uniprot ID</b>	<a href="#">STA5A_HUMAN</a> <a href="#">STA5B_HUMAN</a>
<b>Immunogen</b>	DGYVK
<b>Immunogen Region</b>	
<b>Specificity</b>	A synthetic phosphorylated peptide around Y694 of human STAT5 (NP_003143.2/NP_036580.2).
<b>Immunogen Sequence</b>	DGYVK



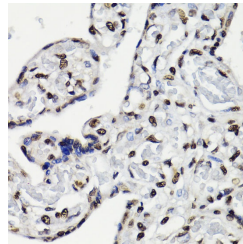
Western blot analysis of extracts of K562 cells, using Phospho-STAT5-Y694 polyclonal antibody (STJ11101025) at 1:1000 dilution. K-562 cells were treated by ATP (5 mM) at 30 °C for 1 hour. Secondary antibody: HRP Goat Anti-rabbit IgG (H+L) at 1:10000 dilution. Lysates/proteins: 25µg per lane. Blocking buffer: 3% BSA. Detection: ECL Basic Kit. Exposure time: 1s.



Immunohistochemistry analysis of Phospho-STAT5-Y694 in paraffin-embedded mouse liver using Phospho-STAT5-Y694 Rabbit polyclonal antibody (STJ11101025) at dilution of 1:200 (40x lens). Perform microwave antigen retrieval with 10 mM Tris/EDTA buffer pH 9.0 before commencing with immunohistochemistry staining protocol.



Western blot analysis of extracts of A-431 cells, using Phospho-STAT5-Y694 polyclonal antibody (STJ11101025) at 1:1000 dilution or STAT5B antibody (A12356). A-431 cells were treated by EGF (100 ng/mL) at 37 °C for 30 minutes after serum-starvation overnight. Secondary antibody: HRP Goat Anti-rabbit IgG (H+L) at 1:10000 dilution. Lysates/proteins: 25µg per lane. Blocking buffer: 3% BSA. Detection: ECL Basic Kit. Exposure time: 60s.



Immunohistochemistry analysis of Phospho-STAT5-Y694 in paraffin-embedded human placenta using Phospho-STAT5-Y694 Rabbit polyclonal antibody (STJ11101025) at dilution of 1:200 (40x lens). Perform microwave antigen retrieval with 10 mM Tris/EDTA buffer pH 9.0 before commencing with immunohistochemistry staining protocol.

This product is suitable for in-vitro studies under the RESEARCH USE ONLY [RUO] licence. This product must not be used as for diagnostic or other medical purposes.

St John's Laboratory Ltd, Knowledge Dock Business Centre, University Way, London, E16 2RD | Tel: 0208 223 3081